

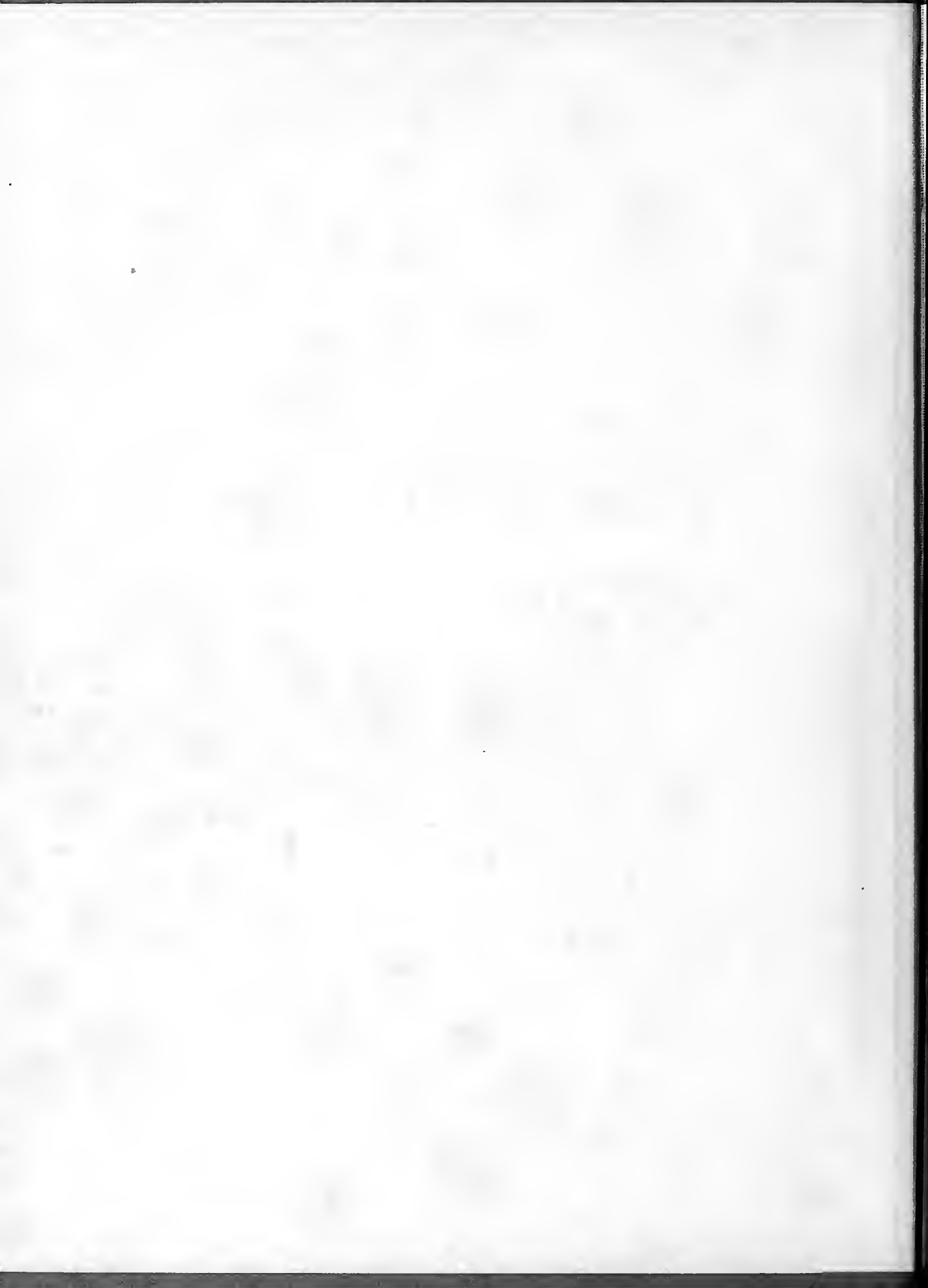


*The Nineteen Hundred Sixty-One*

**CORONET**





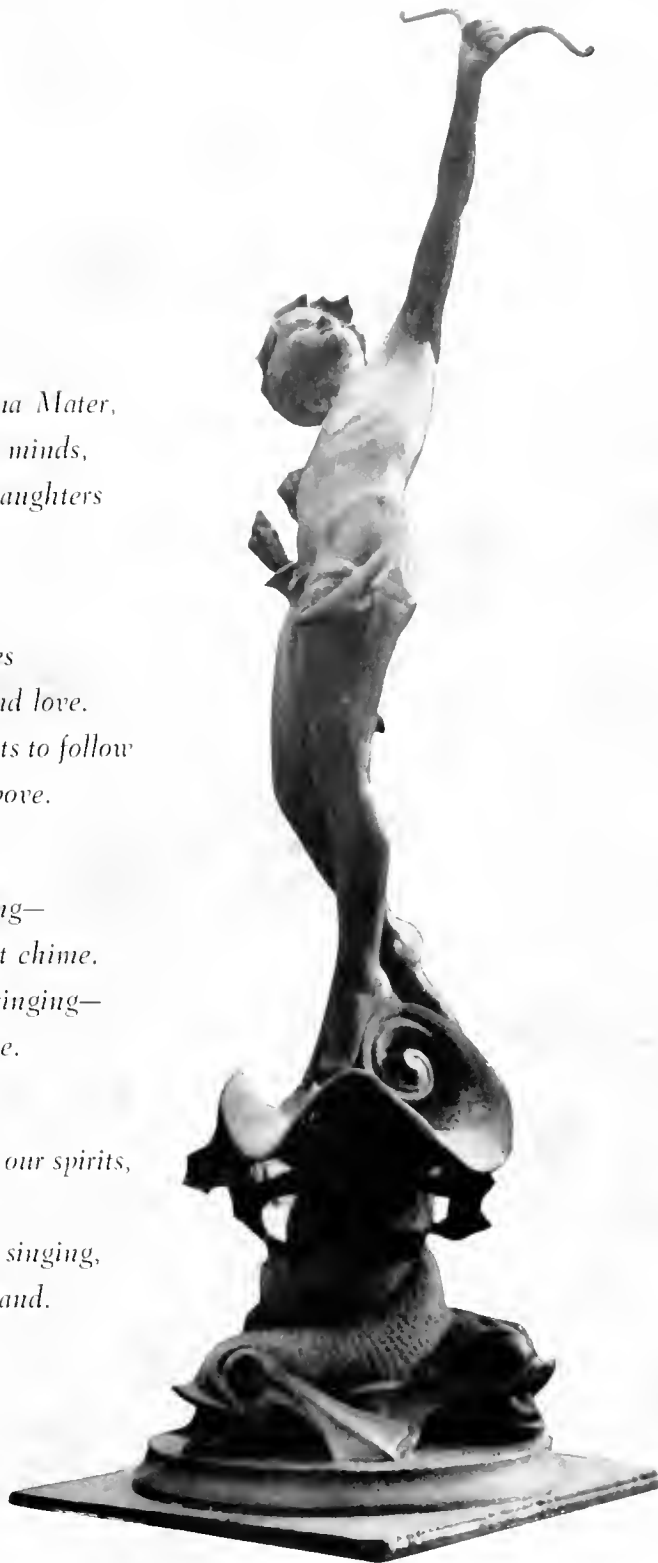


*Guardian bright, our Alma Mater,  
Molder of our hearts and minds,  
Light high visions in thy daughters  
And a loyalty that binds.*

*Gladly do we lift our voices  
Pledging thee our faith and love.  
Teach our minds and hearts to follow  
Him who leads us from above.*

*Living truth is ever ringing—  
Tune our ears to hear that chime.  
Lasting wisdom peace is bringing—  
Lead us in her way sublime.*

*Queens, to thee we pledge our spirits,  
Ever thine, a loyal band.  
Queens, thy praises we are singing,  
Grateful for thy guiding hand.*



THE ANNUAL PUBLICATION OF THE STUDENTS OF  
QUEENS COLLEGE • CHARLOTTE, NORTH CAROLINA



*The Nineteen Hundred and Sixty-One*

# CORONET

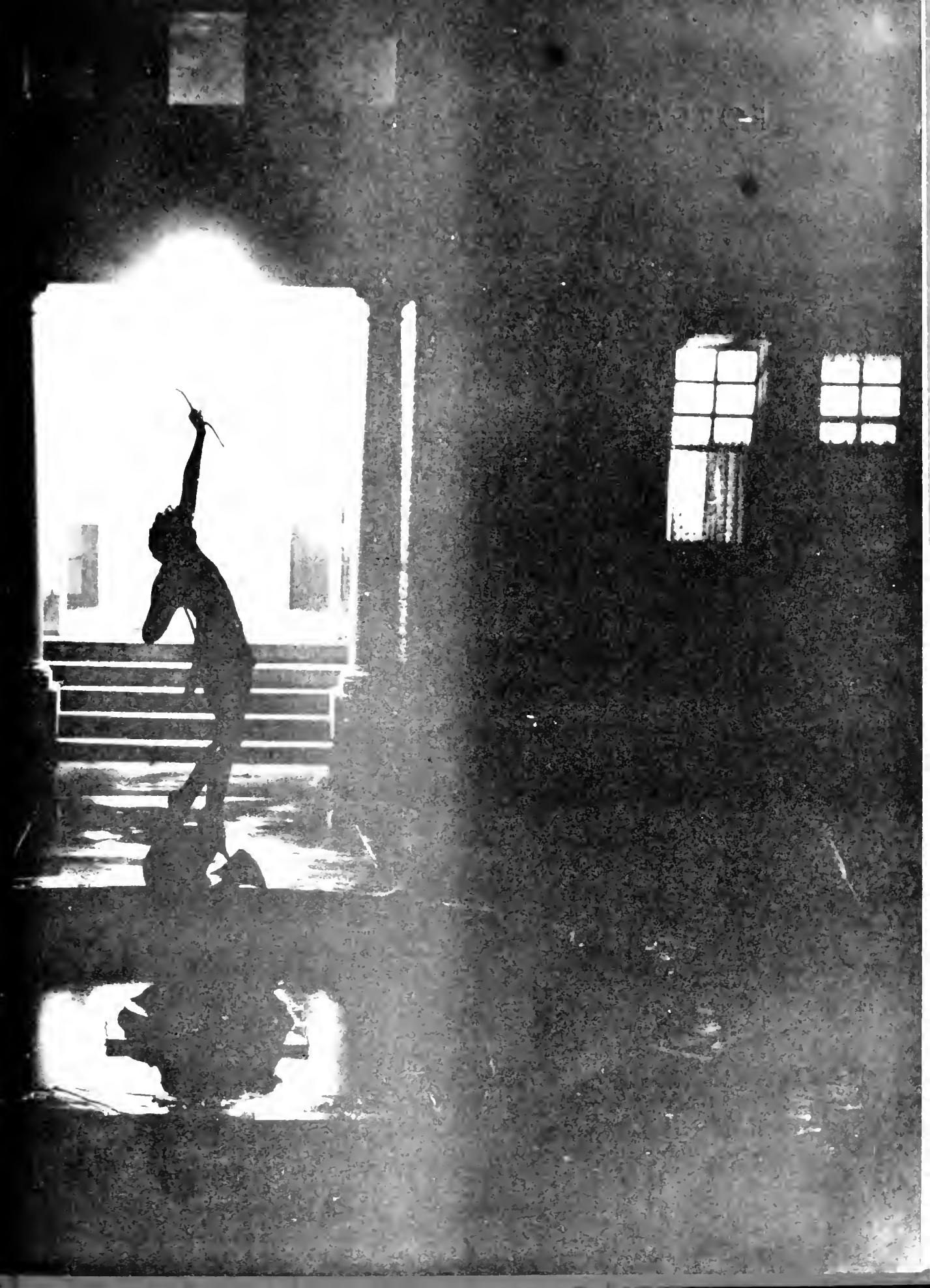
Editor, GENIE VANCE • Business Manager, VIRGINIA ROSE • Advertising Manager, MARGARET MILLER



*These are the paths  
we trod—  
Knowing that by following  
we would learn  
Someday to find our way  
alone  
And lead another  
on some other path.*







# FOREWORD

In a quest we come.

New paths to follow bring  
new responsibilities. *Lead us.*

An exploration becomes a  
knowledge—to ask, to find  
answers, and to ask again. *Teach us.*

Unsure steps take us from  
ourselves toward the discovery  
of a world. *Guide us.*

In a quest we leave Queens—  
a place, an idea, a way  
of life . . . the search will  
continue with deeper and  
surer proportion.

## CHANNELS THROUGH WHICH WE WERE GUIDED

RESPONSIBILITY	
Government	10
Student Councils	12
<i>Flier</i>	15
Religion	16
DIVERSION	
Panhellenic	20
Sororities	22
Recreation	34
Socials	37
Publications	38
Clubs	43
ACHIEVEMENT	
Honoraries	48
May Day	50
Who's Who	56
KNOWLEDGE	
Administration	60
Faculty	64
Staff	66
Curriculum	68
Classes	70
Scholars	87



## D E D I C A T I O N

Because . . .

- you are devoted to teaching,
- your interest in learning has made us want to learn,
- you give a valuable part of yourself to every student,
- you speak beautifully and enthusiastically,
- even the sunshine sifts through the trees to glimpse your office door.

we dedicate the 1961 CORONET to you,

ELIZABETH CHANDLER CUMMING



## RESPONSIBILITY

*Each of us has a primary responsibility to herself as an individual. To some is given the opportunity to follow . . . to some, the opportunity to lead. In our*



*leaders are placed the trust and confidence of all, and living up to these is responsibility. Guiding, molding—a student's challenge and a leader's hope.*



# STUDENT GOVERNMENT ASSOCIATION

We, the students of Queens College, believe the theory behind the development of student government rests on the assumption that by giving students reasonable

independence in governing matters, they will mature in their concepts of freedom and responsibility.

Through a student government the worth of each in-



*ANN VANDIVER, President*



*Seated: Linda Cashwell, Secretary; Ann Vandiver, President. Standing: Patsy Guyer, Second Vice-President; Judy Fisher, N.S.A. coordinator; Nancy Abel, Treasurer. Not pictured: Adelaide Anderson, First Vice-President; Ruth Wilkes, Judicial Board Chairman.*

dividual and the value of her contribution may be recognized; and as free citizens of the college community, students have the right to question the foundations of the rules to which they are held accountable and to voice

their opinions in an honest and intelligent way on matters that concern them and their college. From Constitution, Student Government Association



The Election Committee burns midnight oil preparing the slate before elections, and counting ballots for various offices.



Candidates for major offices make speeches before elections. Ann Fischer and Ruth Scholten listen to Linda Goodman's speech.

## STUDENT LEGISLATURE

A legislative body representing major organizations, classes, and publications . . . functioning to provide opportunities for growth and fulfillment of student needs . . .

*First row:* Ann Fischer, Adelaide Anderson, Nancy Abel, Patsy Guyer, Sue Ross, Ann Bloodworth, Ann Vandiver. *Second row:* Gail Rutherford, Harriet Sloop, Genie Vance, Cynthia King, Judy Fisher, Ruth Wilkes, Kay Taylor. *Not pictured:* Marilyn MacQueen and Jeannette Prevette.



# RESIDENT STUDENT COUNCIL

These students carry on the sometimes thankless but necessary tasks of making and enforcing social regulations and upholding the merit system.

No longer considered a vicious group of Dick Tracy's, RSC has proven itself an organization *for* students by modifying rules and encouraging consideration of others.

ADELAIDE ANDERSON, *President*



*Seated:* Suzann Morton, *Secretary*; Adelaide Anderson, *President*; Ann Porterfield, *Treasurer*. *Standing:* Linda Hardee, Kent Anderson, Henrietta Taylor, Marg Seay, Betty Raye Cox, Susan Brooks.

In black robes on Monday nights, they may campus you—that's their job—but they're human, too!





# DAY STUDENT COUNCIL

A fresh coat of paint, a new rug, old furniture re-finished, and shrubbery planted to border the wide walkway that was once a drive "so *this is Queens, aha!*"

Now more comfortable and attractive, Blair Union is

Blair Union, a home away from home for the day students



always full of day students playing bridge, eating bag lunches, or studying.

The Black Friday Auction offered students everything from an African violet to a Shealy original or a trip to the mountains with Miss Moffett... all for a price, that is!

PAISY GUYER, *President*



Susan Douglas, *Secretary*; Carol Jean Larson, *Treasurer*; and Dee Ashworth, *Freshman Representative*, are planning the sale of tickets for special permissions at the Black Friday Auction. Not pictured: Carolyn Alexander, *Vice-President*.



# JUDICIAL BOARD

This year saw a change in the judicial branch of Student Government. No longer called Honor Council and having more jurisdiction than before, Judicial Board is now composed of four members and a chairman, who are elected by the student body. The president of Student Government serves as an *ex-officio* member.

Realizing that the Honor Code is one of the most vital aspects of student life at Queens, Judicial Board strives to insure the understanding and effective working of the code and to assure each individual of her rights.

All decisions made by Judicial Board are subject to the opinion of the Advisory Board, which consists of the President of the College, the Dean of the College, and the Dean of Students.



RUTH WILKES, *Chairman*

Ann Vandiver, Adelaide Anderson, Linda Cashwell, Ann Bloodworth, Ruth Wilkes and Ruth Scholten.



# THE FLIER

*Our challenge:* to provide a weekly calendar of events, announce-  
ments, and news articles for each student and faculty member.

*Our task:* to type the stencil, correctly spaced, with no errors and to  
voice opinions through editorials.

*Our ambition:* to expand *The Flier* into a weekly college newspaper  
in the near future.



The *Flier* Staff helped Ann type and put the *Flier* in our mailboxes every Saturday: Anne Cooke, Eleanor Randolph, Linder Carter, Susann Finkler, Kathryn Oehler, and Susan Foster.



ANN FISCHER, Editor

# FRESHMAN ADVISORY COUNCIL

One friend already made waiting to greet her . . .  
someone to tell her the *do's* and *don't's*, the *why's* and

*how's* of campus life . . . someone with whom to share  
her fun and fears from the first . . . her FAC.



First row: Marcia Brinkley, Rosanne Eubanks, Lynda Wilkinson, Janet Judd, Carolyn Shelley, Madeline Hahn, Carolyn Rogers, *Chairman of Orientation*, Helen Jackson. Second row: Joanna Brooks, Mary Bruce Grimsley, Maywood Nisbet, Marg'e Smith, Susan Abernethy, Sue Camlin, Betsy Hutchins, Henrietta Taylor. Third row: Genie Stallworth, Jovce Wingate, Sula Evans, Mary Quick, Janet Allison, Brenda Blackwelder, Merry Kilner, Louise O'Kelley.

# QUEENS CHRISTIAN ASSOCIATION

In the light of self-evaluation of purpose and need, QCA planned its activities this year according to three areas—*worship*, *study*, and *action*.

The attempt to provide worship opportunities has been a primary concern. The Christian Faith and Heritage Commission was responsible for several early morning worship services, dorm prayer meetings, and a Thanksgiving communion service. The chapel programs were planned using different forms of worship. World Day of Prayer was observed and the pre-Christmas activities were concluded with a vesper program given by the Freshman Class. Students discussed their questions about worship during the Off-Campus Retreat in April.

A study program was initiated in cabinet meetings, and campus study was begun in the Sunday Evening Forums. The QCA Library moved to the big one this year and provided material for individual study and preparation for Christian Re-Emphasis Week and the Off-Campus Retreat.

*Study* and *worship* stimulate *action*. A retreat for the freshmen during Orientation was QCA's first event. The Social Responsibility Commission has provided outlets for response by sending girls to help at the Rehabilitation Center and at Bethlehem Center. The World University Service campaign enabled students to express concern for refugee students in Algeria.

Considering *worship*, *study*, and *action*, the cabinet chose "Christianity in an Age of Crisis" as the theme of Christian Re-Emphasis Week. A series of chapel services led by Dr. James A. Jones of Union Theological Seminary in Richmond; discussion groups led by faculty members, guest speakers, and students; and a Communion Service led by the Rev. Stuart D. Currie; these were contributions to a significant week. Two issues of *Emphasis* provided added interest in the work of QCA on campus.



SUE ROSS, President



Ruth Scholten, Vice-President; Patsy Arscott, Secretary; and Beth Rivers, Treasurer, plan issue of *Emphasis*.



Polly McClure, Claudia Johnson, and Betsy Thomson plan chapel programs.



Sue Fimo, Sue Camlin, Janet Judd, and Dr. Prever discuss parallel reading for Christian Re Emphasis Week.



Carl Cochran, Carolyn Shelley, and Barbara West head for Bethlehem Center.



Patsy Arscott, Sue Lane, and Sue Brown attend the YWCA Assembly in Richmond.



## DIVERSION

*Each of us must weigh her ideas and find out where she wants to place her values. Some feel that college is bookwork and others, fraternization; wherever the emphasis, we all share a realization that we must search ourselves*



*for what really matters in life. We are able to benefit from a variety of situations. We can socialize for the sake of partying, play without winning, and emphasize things worthwhile only to our individual enjoyment without losing sight of what is really important to us.*



## PANHELLENIC COUNCIL

Panhellenic Council faced questions and problems by the dozen this year: Would the Panhel handbook ever get printed; and if it did, would the freshmen benefit from it? Would the council be accused of influencing the freshmen since they visited in the dorms and had one rushee ask how she could pledge Panhel? Would the sorority girls pay eight dollars apiece for a dance even if their fiances were eight hundred miles away? Would Ray Charles bring the Rayettes? Would Ray Charles show up at all? Would Ray Charles . . . ?

With Cynthia leading the group—in promoting more congenial relationships between sororities through having all members work together on the dance, the workshop, and rush rules—it *had* to be a job interrupted by gales of laughter.



CYNTHIA KING, President

Betsy Linn, Cora Helen Fry, *Alpha Gamma Delta*; Carolyn Rogers, Pat Sims, *Phi Mu*; Genie Stallworth, Linda Goodman, *Alpha Delta Pi*; Mary Lee Hale, Mary White, *Alpha Chi Omega*; Kay Mack, Pat McDaniel, *Chi Omega*; Marie Clyburn, Betsy Johnson, *Kappa Delta*; and Cynthia King, center, conducting a bid session.







"The Sorority Sing trophy goes back to A D Pi!" Cynthia King to Linda Goodman.



Mary Lee and Pat represent Panhel and play encyclopaedia to freshmen who are confused about Rush Week.

## *Panhellenic sponsors "big name band" . . .*

"Mrs. Gebhardt, do I have to put two choices?"



Ray Charles plays for the Panhel dance.



# ALPHA CHI OMEGA



Janice Adams  
Jen Alford  
Nancy Apperson



Dee Ashworth  
Carolyn Bero  
Cleone Blair  
Anne Bright  
Helen Cranford



Judy Crotts  
Beverly Dean  
Eleanor Garst  
Carol Gorman  
Mary Lee Hale



June Horner  
Carolyn Hough  
Jean Hunter  
Bobbie Jackson  
Sara Mullis



Jean Norris  
Ramona Orta  
Nancy Quillen  
Dorothy Stamey  
Kay Travis



Mae Thompson  
Mary White  
Joyce Wingate



MARY WHITE, *President*



"Teahouse of Alpha Chi Omega"

## *A X O jumps to second place in scholarship . . .*

With anticipation and a lot of new ideas, the Alpha Chi's busily prepared for Rush Week. We were pleased when our decorations for the Japanese party received the approval of two young Japanese boys.

When rush was over we began a year of fun and activity. The pledges' Waffle Breakfast had a terrific turnout for a rainy Sunday morning. Dot and Jean proved their enthusiasm as they sat on the chapter room floor all morning making waffles!

The actives showed the pledges how to be sophisticated. Mary Lib provided the atmosphere by blowing Lawrence Welk-type bubbles. The champagne (better known as ginger ale) was delicious, and the talent . . . Helen "Pearl Bailey" Cranford and Joyce with her magnificent voice-Wingate made a contrast—to say the least!

Before we knew it we were standing on the stage in Ninniss competing for the Sorority Sing trophy. We barely missed, but we were delighted to receive the award for second place.

Our sneaky pledges confessed at the Christmas party that they were the "Secret Sweeties" who had been doing nice things and leaving surprises for us.

And then there was the slumber party when Miss Atkins slid around all night and Bero spent the night in the powder room playing "Here's to the Health of Colonel Puff!"

We showed that there was more to the year than just partying when we tied for second place in the scholarship competition between sororities.

In April we served as hostesses for the District IV Convention of Alpha Chi Omega; this kept us all busy with many details to be worked out. Graduation and good-byes were here before we knew it, and we looked forward to next year with the same anticipation and some more new ideas.

Eleanor Starnes, *Vice-President*; Cleone Blair, *Treasurer*; Mary Lee Hale, *Secretary*; June Horner, *Pledge Trainer*.



# ALPHA DELTA PI



Janet Allison  
Emilie Anderson  
Rela Anderson



Harriet Barrow  
Sue Camlin  
Mary Campbell



Sue Challen  
Jeanne Chapman  
Carol Cochran



Susanna Coley  
Anne Cooke  
Helen Creveston



Lamar Deahl  
Rene Dedman  
Janet Ferran



Susann Finklea  
Judy Fisher  
Charlotte Gaulding



Linda Goodman  
Judy Gray  
Julie Green



LINDA GOODMAN, President

The near calamity of Virginia's knocking herself out by trying to run through the *window* at the ADPi house was forgotten when twenty-one new pledges came in—through the *door*—on the same night. They soon found out that what Linda had said about "we want you to know" was true. This was shown by all the hard work that went into bringing the scholarship, sorority sing, and basketball trophies back to the house.

Carol Grieve	Jo Ann Hill	Lib Hook	Betsy Hutchins
Margaret Miller	Leighton Moffett	Bonnie Myers	Louise O'Kelley
Carolyn Shelley	Sue Beth Slocum	Carol Ann Speake	Genie Stallworth





Flora McNair, *Treasurer*; Linda Thompson, *Corresponding Secretary*; Carol Cochran, *Vice-President*, Carol Ann Speake, *Recording Secretary*.



"SOME . . . castle!"

Instead of spending money for their annual project, the pledges helped out in the administrative offices on campus, so their gift to the actives was over \$200 for the rug fund. To add to this, "Operation Moonshine" was set up with squads selling food in the dorms on Sunday nights and on the "beaches" over the weekends.

If Jane hadn't sprained her ankle at the slumber party

and Mary hadn't fallen while practicing for the Olympics, it would have been a perfect year.

If Alice hadn't said, "You're all so neat!" right after pledging, if Claudia hadn't fallen off her chair at the Initiation Banquet, if Miss A. hadn't scooted in the scooter contest at Davidson, and if Sue hadn't suggested selling the house to pay for itself, the year wouldn't have been half as much fun.

## *three trophies back home at A D Pi . . .*

Claudia Johnson  
Linda Pegram  
Pat Stell

Merry Kilner  
Phoebe Pierce  
Caroline Stiles

Bella Lancaster  
Beth Rivers  
Linda Thompson

Sue Lane  
Priscilla Robertson  
Ann Vandiver

Alice Methfessel  
Virginia Rose  
Phyllis Whitenack

Joyce McCubbin  
Sue Ross  
Martha Woods

Ann McGrath  
Liz Bucker  
Kathie Wright

Flora McNair  
Chris Safford  
Paige Young



# ALPHA GAMMA DELTA



Judy Black  
Virginia Bopp  
Marcia Brinkley



Vivian Bullock  
Sandie Cannon  
Betty Carmichael



Linder Carter  
Nancy Chostner  
Mary Louise Coiner



Betty Cox  
Sara Craig  
Sally Dawson



Darrie Deutsch  
Susan Foster  
Cora Helen Fry



Mary Bruce Grimsley  
Marilee Guigou  
Madeline Hahn



Holly Hollingsworth  
Rachel Hunter  
Patricia Hutchins



Helen Jackson  
Sally Jenkins  
Jo Ann Jones



CORA HELEN FRY, *President*

## *A G D wins Davidson-*

Jo Ann Jones, *Secretary*; Betty Carmichael, *Pledge Train-*  
*er*; Gypsy Pool, *Treasurer*; Gail Rutherford, *Vice-Presi-*  
*dent.*



Who can forget our Alpha Gam year? Our return in September, new rings and pins flashing . . . preparation for our nativelyland rush party, complete with leis, sarongs, and Prestridge as chief . . . twenty new faces at our annual pledge party at Madeline's cabin . . . the week the house was spie and span for a big alum meeting when our plaque disappeared for a while, but was soon found in the possession of certain Davidson PiKA's . . .

Practice for sorority sing and the southern accent of director, Mary Bruce . . . the Christmas season made brighter by the ATO's gift of a Christmas tree for their "sisters" . . . Panhel weekend . . . the Alpha Gam-Phi Mu party Friday night where Dr. Pohlman played the marimba with the combo, and Saturday night when Ray Charles played for the dance . . .

The ATO Olympics which gave us egg-stained blouses, sore muscles, and an addition to our trophy case . . . May Day with Queen Gail and Peggy . . . our loss due to graduation and wedding bells . . . the perfect ending to a wonderful year . . . the beach!

## Queens Olympics . . .

" . . . We want to share it with you . . . "



Judy Jones  
Betsy Linn  
Alice Marks



Pete Marsh  
Marilyn Mason  
Ginger McDonald



Anne McGee  
Sara McLaughlin  
Ann Miller



Diane Neighbors  
Connie Oyer  
Gypsey Ann Pool



Janet Porter  
Judy Prestridge  
Mary Quick



Betty Robertson  
Gail Rutherford  
Jackie Shaw



Ann Sutherland  
Suzanne Swain  
Kay Taylor



Lynn Vance  
Barbara West  
Margaret White



Jane Whitley  
Sandra Williams  
Peggy Wiriden



# CHI OMEGA



Suzann Morton, *Vice-President*; Kit Lyon, *Secretary*; Rae Ellen Beebe, *Pledge Trainer*; Betsy Thomson, *Treasurer*.

Chi Omega returned in the fall. Rush came—we sang our old songs with renewed vitality, and twenty-three top-notch pledges were welcomed by both Chi O's and the annual Charlotte monsoon season.

Halloween found us at Carolina as guests of the Chi Phi's—also attending was the Great Pumpkin.

Endless hours were spent in practicing for Sorority Sing, and this year we had an added attraction: Charlotte and her harp.

We shared Christmas by adopting a local family of ten, completely outfitting each, and providing their Christmas dinner.

In February, our four-years-overdue national visitor came to call. With Marion's expert advice, we had the best initiation week we've had for years; and to top it off, at the initiation banquet Hope and Ann were selected as the "bestest."

Parties during the year included our faculty coffee in March, a combo party with the ADPI's, and the party our pledges gave for the freshmen—featuring Bohannon in grass skirt and Mr. Hadley in gray flannel suit.

Graduation, sadness in singing "In the Shades of Evening," and frantic packing completed an unforgettable year.

- |                |                  |                    |                 |                |                 |                 |
|----------------|------------------|--------------------|-----------------|----------------|-----------------|-----------------|
| Nancy Abel     | Jean Albritton   | Hope Bayley        | Rae Ellen Beebe | Ann Bloodworth | Marion Bohannon | Margaret Bowers |
| Sue Dyer       | Ann Eason        | Linda Rose Feitler | Pat Files       | Janice Fowler  | Jeanne Freeman  | Judy Fuller     |
| Carolyn Lawall | Kay Mack         | Julia Massey       | Ann McCutchen   | Pat McDaniel   | Suzann Morton   | Helene Nichols  |
| Marg Seay      | Elizabeth Sledge | Harriet Sloop      | Suzanne Stedman | Jane Tallman   | Betsy Thomson   | Lynn Thurman    |







Pae McDaniell, President



Chi O Slumber Party like unto bedtime

## Telephone adds convenience to Chi O house . . .

Nancy B. Brady	Caroline Burgin	Charlotte Cherry	Marianna Christian	Joanne Cooper	Mary Deaton	Lookie Dekle
Judy Gardner	Barbara Goodwin	Patsy Guver	Sara Harrington	Ann Hunsberger	Ida Johnson	Kit Lyon
Carol Nunn	Ann Porterfield	Jeannette Prevette	Lane Rockett	Ann Sanders	Pam Scarborough	Becky Shaffer
Sue Tanning	Kaye Wagner	Judy Ward	Robbie Weathers	Jane West	Nan Woodham	Lynn Woodward



# KAPPA DELTA



Brownie Allen  
Patsy Arscott  
Grace Baker



Anita Cahoon  
Sally Cason  
Marie Clyburn



Allen Craig  
Myra Dailey  
Nancy DeWitt



Bevie Eckert  
Rosanne Eubanks  
Betsy Falk



Renate Freeman  
Susan Gabb  
Lou Ann Garland



Gene Givhan  
Kay Gray  
Carole Hall



Linda Hardee  
Nan Harper  
Alice Hemphill

After exchanging stories of summer fun and getting the "I wish we were back at the beach" attitude out of our systems, we settled down to the hard work at hand and began preparation for rush. We were glad to welcome back Myra, Martha, and Mary Lee, and were sorry when Martha left again at semester break.

Hardee, with her stack of recs and stuffed fish, soon had us rushing in more ways than one! Gene as Katy Drummond welcomed the rushees to the "green and white abode on sorority road"—and she must have impressed them, because in October, we welcomed twenty-three new pledges to KD.

The pledge banquet at the Steak House was highlighted by the presence of several 1960 alums and Harriet's "long and inspiring address" to the chapter.

Marie, who kept the chapter organized, the national officers happy, the kitchen cleaned, and the heat fixed, still managed to be Miss "Everything" in beauty contests.

The pledges sold cookies, the actives contributed, and Patsy pinched pennies; finally we stood back and admired our beautiful new stereo—which hasn't been quiet since.

Christmas came before we knew it, and Brownie and Agnes did a terrific job planning and making us practice for Sorority Sing. Even though we couldn't afford to bribe the judges, we enjoyed singing and will long remember the "puppa-prums" and "puddley-pums" we sang in the "Little Drummer Boy." Shortly after Sing, we had our Christmas alum feed and our banquet at the house given by the pledges. Scotty starred in the production of the "Littlest Angel," and David was crowned "Dream Man" for the second year.

Anne Holmead  
Polly McClure  
Sharon Scott

Sloan Ingram  
Martha Middlebrooks  
Susan Scruggs

Sadie Jennette  
Marian Morris  
Sandra Slevin

Betsy Johnson  
Sallie Patterson  
Rosemary Smith





Gene Givhan, Assistant Treasurer; Susan Gabb, Vice-President; Polly McClure, Secretary; and Patsy Arscott, Treasurer.



"... pardon me, but I'd rather be down with those Kappa da-da-da-da Deltas!"

In the sorority basketball tournament, the KD's made it through the second round, losing to the ADPI's who went on to win the tournament. The disaster of the game was not losing but Hardee's falling and breaking her ankle.

Some funny things have happened to make this year special; someone rang the doorbell during initiation. Da-

vid and Cynthia sang David's song at all special occasions, Patsy was "sister-me" and Rosemary, after being selected "best pledge," was left at the Stork after the initiation banquet until eleven o'clock.

We were proud but sorry to watch seven members step out of our circle to strive elsewhere for "that which is honorable, beautiful and highest."

## New stereo rocks the K D house . . .

met Judd  
iz Peck  
ita Souther

Carolyn King  
Rachel Pinkston  
Becky Thompson

Cynthia King  
Ann Powell  
Genie Vance

Emily Lloyd  
Susan Butler  
Sherry Wells

Agnes Marks  
Ruth Scholten  
Mary Lee White

MARIE CLYBURN, President





We certainly can can-can.



Nancy Gray, Vice-President; Ann Atkins, Pledge Instructor; Carolyn Hitchcock, Treasurer; and Lee Myers, Secretary, take over for the Catalinas during intermission.

# PHI MU

September brought back the old enthusiasm to begin plans and preparation for another Rush Week. Rachel, our "Hard Hearted Hannah," and Margaret, our "St. Louis Woman," kept the Show Boat rocking while Fischer charmed the rushees with her French accent and samples of "My Sin." Big Day and Pattie's version of "Nostrodamos" won twenty new "little sisters" for Gamma Gamma.

The fall and spring fashion show-dances with the Gentry House paid off in more ways than one: we got some tutoring in "being sharp" and some extra cash. The pledges treated us to a festive Christmas Feed. Elaine was quite a Santa with a "little round belly that shook when she laughed" like a bag full of feathers.

Second semester marked the "Return of Alacia" and the arrival of two new pledges—Kathryn and Allison. The more studious pledges changed their status to full-fledged sisters.

Valentine's Day at Queens had a new sparkle in the dining hall from the decorations supplied by our ingenious pledge class. That night the actives were treated to a special party by their little sisters.

And then spring came! Diana gained ten pounds from eating pies while practicing for the Queens-Davidson Olympics. In the background we heard Tuke and George: "Y'all please don't step on the tulips."

## Phi Mu sponsors fashion

Nancy Adams    Ann Aldrich    Adelaide Anderson    Kent Anderson    Ann Atkins    Jane Beckett    Margaret Blevins    Carolyn Bradley    Susan Brooks  
 Nancy Clotfelter    Betty Raye Cox    Betty Daniel    Petra Dickinson    Susan Douglas    Ann Fischer    Jane Gammon    Nancy Gray    Carolyn Hitchcock





PAT SIMS, President

As the fleeting weeks of the school year passed, Jane, Janie Mac, Kent, and Clotfelter led the march of sun worshipers to the roof so they'd be all ready for the house party at O.D., May 28. Kitty, Polly, and Petra primped and preened their feathers for May Day, while others made plans for their June weddings.

This was a happy year for Phi Mu, and our only regret was that Mr. Hadley wouldn't be with us next year.

## show-dances

Verne Brown    Caren Camicia    Linda Cashwell    Diana Churchill  
 Kitty Hobbs    Mary Hopkins    Pedrick Isom    Allison James



Flame Jubanyik  
 Margaret Lee  
 Jonnie F. McCormac



Louise McGarity  
 Janie McMullen  
 Fran Milton



Martha Morrison  
 Betsy Munn  
 Lee Myers



Maywood Nesbit  
 Kathryn Oehler  
 Rachel Patrick



Nancy Patterson  
 Joyce Rainwater  
 Carolyn Rentz



Carolyn Rogers  
 Pat Sims  
 Marjorie Smith



Kitty Sprinkle  
 Henrietta Taylor  
 Betty Thomas



Mary Jac Vaughan  
 Mary Harvey Wilson  
 Martha Waters



# RECREATION ASSOCIATION

RA in action includes the whole student body. Having movies, sponsoring Play Day and tournaments, protecting new grass with "Don't Tread on Me" signs, helping QCA "make a toy," and making the Rec Room enjoyable are the council's doings.

Starting in September with open house at the gym during Orientation Week, Recreation Association set the pace for a busy year. Kathie Wright made a first and lasting impression on the frosh that night with her song. Two-wheeled convertibles provided transportation for autumn jaunts and trips to the laundromat.



"Put another nickle in" our new juke box! Mary Campbell, *Treasurer*; Margaret White, *Secretary*; Martha Woods, *Vice-President*.

Never "too pooped to pop" popcorn for campus movies. Linda Pegram, *Publicity Chairman*; Sula Evans, *Sophomore Representative*; Barbara West, *Dolphin Club Representative*; Judy Black, *Junior Representative*; Lamar Deahl, *Freshman Representative*.



MARILYN MACQUEEN, *President*, and "Flash" are constantly on the go—and usually together.



Jump Ball

After Stunt Night, everyone celebrated in the Rec Room with the new juke box blaring to the rafters, and Judy made enough green punch for next year, too! Play Day proved that people would do almost anything to make points for their class. Even the professors played!

During exams, RA realized that everyone was bored with all the free time, so they threw an "exam break" in the Rec Room. Basketball season included class, dorm, and sorority tournaments. It was really confusing to play Tuesday *against* your teammates of Monday.

And, while all of this was going on, RA Council members still had their heads together planning more activities!



Tookie pings for serve.

## *RA installs juke box in Rec Room . . .*

Sophomore Stunt Night Co Chairmen, Kathie Wright and Ann Porterfield, delightedly receive the trophy from Mr. Babb.



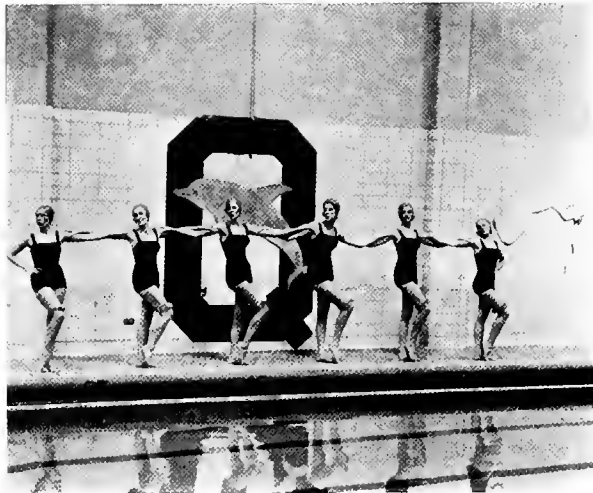
Eleanor, Marie, and Kent enjoy riding at Fisher's stables.



# DOLPHIN CLUB

Water and synchronized swimmers are not the only elements needed to put on a water show. This year it took black skeletons, a red volcano, orange garters, and a white peacock to interpret the theme "Water Colors."

After seeing that Mrs. Magher would settle for nothing short of perfection, and knowing that Va. expected everyone to swim as beautifully as Pat Sims, the club worked harder than ever. The student body was most excited, Mrs. Magher was satisfied, and the show was a "sell out" for four nights!



"C'est Si Bon!"



VIRGINIA ROSE, *President*

*First row:* Kent Anderson, Hope Bayley, Martha Woods, Jane Beckett, Martha Watson, Suzann Morton, Tookie Dekle, Pattie Sims, Virginia Rose. *Second row:* Becky Garrison, Martha Morrison, Ann Atkins, Julia Massey, Sula Evans, Mary Quick, Judy Gardner, Janie McMullen, Barbara West, Mary Campbell. *Third row:* Nancy Clottelter, Sue Tanning, Fran Milton, Margie Smith, Flora McNair, Diana Churchill, Pat Files, Ann Fischer, Angie Williams, Mrs. Magher.





## SOCIAL COMMITTEE

In December, the committee decked the halls for a "Holiday in Silver." On Friday night, the Ray Bryant Trio entertained with an informal (that is, blankets on the floor) concert in the gym. And on Saturday we could have danced all night to the music played by the Duke Ambassadors.

A dance featuring Blair Ellis was the final touch to an exciting May Day weekend. All of this has added up to social life, fun, and a less than empty budget for the Social Committee.



Ray Bryant Concert



KAY MACK, Chairman

*First row: Betsy Linn, Kay Mack, Margaret Blevins. Second row: Ida Johnson, Jane Lawther, Genie Stallworth, Eleanor Randolph, Emily Lloyd, Flora McNair.*





Students receiving *logos* at mailboxes.

# logos

A mirror . . . an idea . . . an atmosphere . . . a magazine . . . all these are reflections of Queens. The magazine is *logos*, and it means different things to different people. To its staff, it shows the interest of Queens students in expressing individual ideas and opinions. To the faculty, it is a means for a more thorough understanding of the students. To the college, it is a comparative study of ideas on different campuses. To Queens students, it is a channel for searching and creating in word and form. It is the questions of the world; it is the answers we've found; it is Queens from cover to cover.



Betsy Thomson, *Business Manager*, and Nancy Quillen, *Circulation Manager*, unwrap copies of *logos*.



*HARRIET SLOOP, Editor*



*Carolyn Rogers, Copy Editor; Betty Jenkins, Poetry and Short Story Editor; and Lynn Woodward, Editorial and Essay Editor, all ways had so much to do.*



*Linda Hardee, Art Editor, and Carol Ann Speake, Make-up Editor, have become excellent critics with all this experience.*

# CORONET

*Time:* midnight on . . . any night from Christmas through deadline (and still we missed it!).

*Setting:* the floor, room No. 229, Harris Hall . . . typewriters . . . pictures to be identified . . . envelopes and copy everywhere . . . a worn yearbook dummy placed within the reach of all . . . a "Quarantine" sign to remind those outside to stay there.

*Characters:*

- three faculty advisors wringing their hands
- the Aulls
- a student body willing to contribute anything but money
- nine people with circles under their eyes, pencils behind their ears, and several pairs of shoes with run-down heels



Flora McNair, *Junior Editor*; Sula Eyans, *Sophomore Editor*; Judy Fuller, *Faculty Editor*; Janet Judd, *Sorority Editor*; Carolyn Hitchcock, *Senior Editor*; Betsy Munn, *Freshman Editor*.

GENIE VANCE, *Editor*



Margaret Miller, *Advertising Manager*, and Virginia Rose, *Business Manager*, sell an ad to Mr. Davis of Marion Davis.



Plot off stage, Margaret pounds streets with contracts, pen, and offering plate . . . Va. jingles piggy bank and considers taking in laundry . . . stage hands enter with trash can full of water and broom to make artificial rain for courtyard picture . . . Phil enters with good ideas and camera . . . Genie screams about

saying something to say about heaven and scratches out seventeen "wonderfuls" in one sorority copy . . . Sula runs from door to door . . . asking questions and scribbling notes . . . Janet improves her typing skill . . . each one writes, criticizes, and re-writes until she falls asleep.



PUBLICATIONS BOARD Seated: Mr. Shealy, Miss Miscally, Miss Calhoun. Standing: Virginia Rose, Genie Vance, Ann Fischer, Harriet Sloop, Betsy Thomson. Not pictured: Mrs. Chalmers, Mr. Fiqharson, Mary Bruce Grimsley.

"... like unto rain!"

The Aulls met their deadline, but they were the only ones!



## CHOIR *Albert R. May, Directing*

A choral amen, a concert at Christmastime, and a spring tour—in these ways the Queens College Choir adds

its voice to our campus. Sometimes they hate staying late on Fridays, but find it's fun to make a "joyful noise."

*First row:* Agnes Marks, Carol Robinson, Martha Fisher, Mary Lee White, Brownie Allen, Betty Raye Cox, Doris Beam. *Second row:* Suzanne MacRae, Dawn Chappell, Kathy Helms, Betty Daniel, LaVerne Brown, Joyce Wingate, Sally Ogburn, Mary Whiteside. *Third row:* Ann Vandiver, Joanna Brooks, Judy Crotts, Genie Stallworth, Mary Bruce Grimsley, Cam Weldon, Helen Jackson, Lamar Deahl. *Fourth row:* Suzy Jackson, Ann Holliday, Pete Marsh, Janice Stewart, Betty Robertson, Lynda Wilkinson, Marilyn Mason, Mery White.



## DELTA OMICRON

From the music building, the combined talents of the members of Delta Omicron are heard. The mixture is amusing and amazing, but it reminds each student that

practice makes perfect. Those who are members strive to approach this goal, and we think they all reach it when we hear them in workshops and recitals.

*First row:* Carol Robinson, Dawn Chappell, Brownie Allen, Joanna Brooks. *Second row:* Judy Crotts, Doris Beam, Marilyn Mason. *Third row:* Marie E. McClure, Miss Marie Johnson.



## BIOLOGY CLUB

Meetings whenever we want them, speakers in the field, and everyone really interested in what the club could do—these characterize the Biology Club this year.

At Pawley's last summer, the ocean breezes nearly put

the Marine Biology class to sleep instead of giving them ambition to learn. Many talks came back to campus about the old house, the sea, "Dr. Jack," and the things that were learned about life under water.

Examining specimens of birds are Mary Quick, Martha Morrison, Dr. Echon, Advisor, Linda Thompson, *President*, Rachel Patrick, and Joanne Jones.



## HOME ECONOMICS CLUB

They sport the best looking clothes on campus, have the least homework, but make up for it in labs, and serve delicious food at teas and "Practice House" meals.

Using their abilities to serve the campus, they helped with the costumes needed for *Our Town*, May Day, and the water show.

Pam Wenham, Polly McClure, Nancy Coe Hall, Ann Atkins, Alicia Lee, and Jane Tallman surround Ida Johnson, *President*, for a chat in the Stultz living room.



*these familiar scenes . . . are Queens*



*The corner mailbox*—a long hike to make sure mail goes out faster

*Phone duty*—a requirement for graduation and everything happens at once

*Diana*—a billboard for coming attractions

*Science building*—a place to sneak into for cokes when the Y is closed

*Coke machine*—the reason we get caught for sneaking in the science building

*Bicycles and laundry bags*—exercise and the cheapest way to have clean sheets









## ACHIEVEMENT

*Rewards come to each of us in different ways. We never feel that our work is useless, because there is always someone to thank us, or smile, or even stand up in front of the student body and say,*



*"This job was well done!" Recognition of achievement comes from within and without . . . but if we are satisfied with what we have done, and only one person says, "Thank You," that is reward enough.*



## ORB AND SCEPTRE

Alpha Kappa Gamma has become a new organization on our campus this year. Now Orb and Sceptre provides a pattern of leadership, serves as a means of communication between students and administration, and provides a

channel for continual re-evaluation of the college in the light of its purposes. Members are selected during their junior year from those whose concern for Queens has been shown in their dedicated leadership.

*First row: Marg Seay, Carolyn Rogers, Sue Ross, Emilie Anderson, Linda Goodman, Adelaide Anderson. Second row: Judy Fisher, Harriet Sloop, Gail Rutherford, President; Linda Cashwell, Ann Vandiver, Ruth Wilkes, Marilyn MacQueen.*



## SIGMA UPSILON

Sigma Upsilon is a fraternity recognizing faculty and students who have shown interest and ability in the literary field. Through discussion and criticism of members' works read at meetings, this organization seeks to im-

prove the quality of student writing. On Awards Day, Sigma Upsilon announces the names of freshmen who have written the outstanding short story and poem.

*Harriet Sloop, Pat Sims, Cindy Trobaugh, Sadie Jennette, President; Mrs. Roberta Chalmers, Betty Jenkins, Merry Jayne McMichael.*



# MARSHALS

Queens College Marshals—chosen on the basis of their cumulative scholastic averages for the years preceding their selection—are the familiar girls dressed in white

resses and blue sashes who usher at all formal academic occasions including convocations, Senior Recognition Day, commencement and baccalaureate service.

Kay Davis, Beth Rivers, Betsy Thomsen, Anne Holmead, Sue Ross, Suzanne MacRae, Jane Dudley, and Emilie Anderson, *Head Marshal*. Not pictured Kay Hilton Long.



# SIGMA MU

Sigma Mu, a regional honorary fraternity, chooses its members from those of the junior and senior classes and faculty who have shown outstanding scholastic achieve-

ment. One of the most important purposes of the fraternity is to encourage independent research.

*Seated:* Dr. Curtis W. R. Larson, Miss Blue Calhoun, Sue Ross. *Standing:* Emilie Anderson, Betsy Thomsen.





GAIL RUTHERFORD

# MAY QUEEN



HARRIET SLOOP, *Maid of Honor*

*May Day Co-Chairmen, Gemie Stallworth and Flora McNair, are forecasting pretty weather for May the sixth.*

## MAY DAY

Beauty from foreign lands . . . beauty from America . . .  
May Court in authentic costumes . . . dancers in peasant  
dress . . . May Queen and Maid of Honor in American  
white . . . choir singing May Day Carol . . . the Maypole  
dance . . . a mixing of countries . . . a secret's hard to keep.  
Yes, Gail is our Queen!



JOYCE McCUBBIN, CAROL GRIEVE, ANN EASON, AND ANGELA WILLIAMS







BETTY RAYE COX, PHYLLIS WHITENACK, PEERA DICKINSON, AND KAY MACK

MARGARET MILLER, LINDA GOODMAN, JANE LAWTHER, AND GENIE STALLWORTH





KITTY HOBBS, PRISCILLA ROBERTSON, FLORA McNAIR, AND PEGGY WIRIDEN



SUE ROSS



PATSY GUYER and  
ANN VANDIVER



RUTH WILKES and ADELAIDE ANDERSON

MARILYN MACQUEEN and JUDY FISHER



# WHO'S WHO Among Students in American Universities and Colleges

In blazers and pleats, we represent Queens.

We don't step on the Queens seal, and Mrs. Kelly will lend us the key to the Post Office at any time. We never use all seven of our chapel cuts, and we get demerits only when the school clocks are right and everyone else's is wrong.

We could carry on a conversation with a door knob, and we call every student on campus by name. We enter the science building only through the *doors*.

We keep phone duty with our shirt-tails tucked in. Our pencils are sharpened, our beds are made, and our watches are always wound.

Bedtime and bridge are two things we know very little about, neither are we particularly familiar with the interior of the infirmary.

We beat the teachers to class, even when we're late, and if we accidentally sleep through one, it's on the day we get a free cut. The library is our home, when it's open, yet we've worn out two busy signs apiece.

We live by schedules and get everything done on time. We go from one meeting to another, carrying gavels to some. We speak and others listen. We are students and teachers, leaders and followers, *and* we are seniors!

In blazers and pleats, we represent Queens!



HARRIET SLOOP and MARG SEAY

CAROLYN ROGERS and GAIL RUTHERFORD



EMILIE ANDERSON





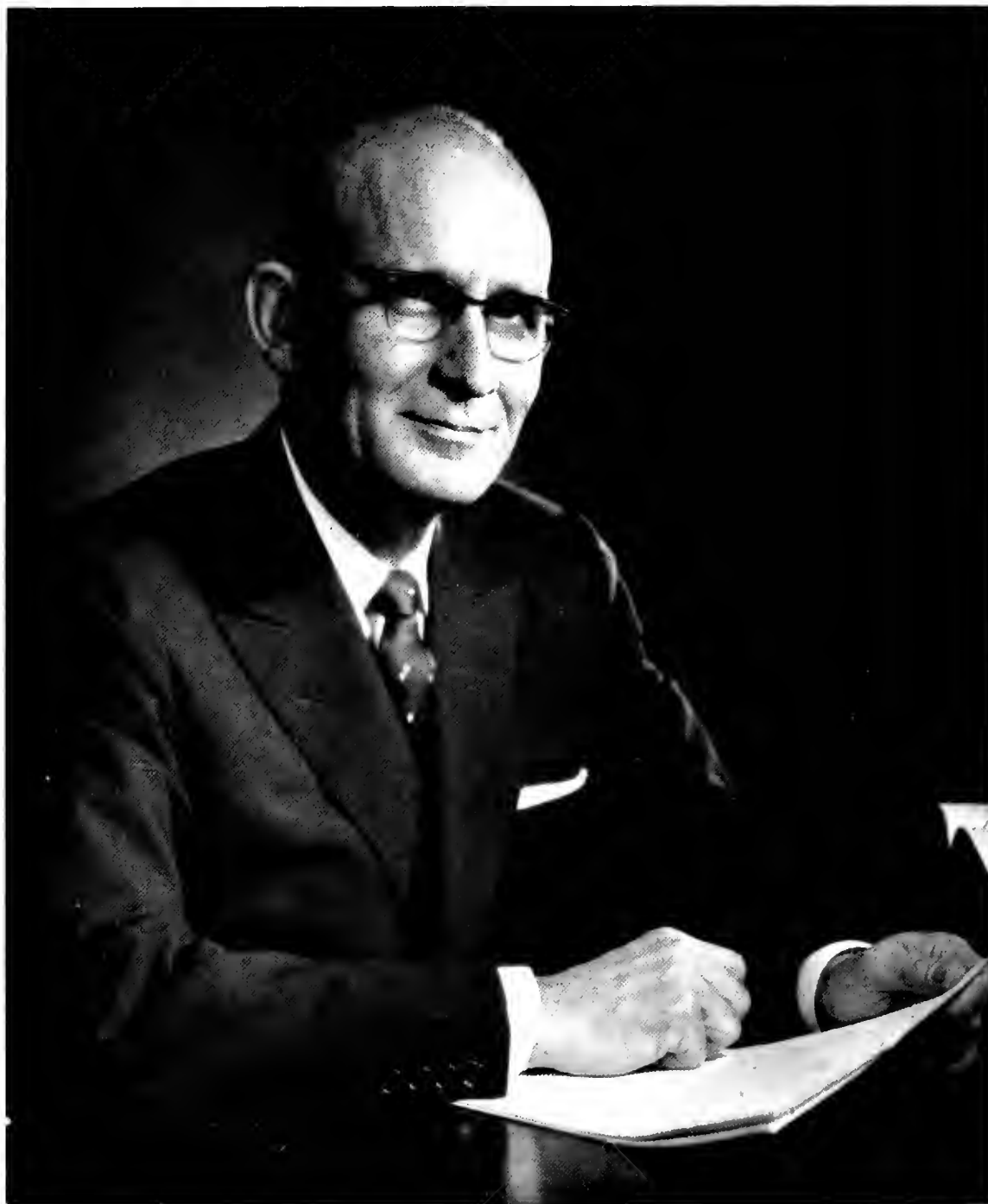
## KNOWLEDGE

*To "Face the Nation" or "Beat the Clock" each of us has to know the rules of the game. With the hope that we will excel as businesswomen, teachers, or housewives, we find it extremely important to take advantage of opportunity.*



*We can never be content with the knowledge we have because one question always brings another. When we stop and think, it suddenly hits us that there is much we do not know, for this reason, we know we will never stop searching.*





## PRESIDENT OF THE COLLEGE

DR. EDWIN R. WALKER

Because of his professional excellence and his willingness to listen and advise, because in chapel he speaks on topics of universal significance and at Christmastime reads stories to a dorm full of sleepy-eyed students, and because Queens means much more to us for knowing that he is a part of it, we are grateful to have had the privilege of his guidance.



## Assistant To The President

MR. EVERETT T. COURLEY, JR.

A new face filling a new position on campus . . . a man who is never alone . . . He wasted no time in learning everyone's name and making friends with students and faculty alike. His concern for the progress of Queens is shown by his diligent work and his interest in each student.



## Board of Trustees



Members of the Board of Trustees attending the December, 1960, meeting.

*Seated:* W. Priestly Conyers, Jr., Mrs. S. P. Stowe, Mrs. Curtis B. Johnson, Dr. Chester Alexander, Dr. Edwin R. Walker, George W. Dowdy, John M. Akers, Dr. E. I. Knight, The Rev. James E. Fogartie, Dr. Lynn I. Jones. *Standing:* William H. Barnhardt, Thornton H. Brooks, James J. Harris, C. P. Street, Hunter Marshall, Dr. Edward G. Lilly, The Rev. Joseph W. Everett, Jr., Paul Quattlebaum.



## Dean of the College

DR. CURTIS W. R. LARSON

A "pursuit of excellence" is his motto; a "community of scholars," his goal. Perfection is beyond our grasp, but through his inspiration we are challenged to aim toward this excellence.



## Dean of Students

MRS. ANN S. GEBHARDT

The interest and concern of one we admire make us willing to work even harder. And she is the one whose image comes to mind when we speak of *the model Queens lady*.

## ADMINISTRATIVE OFFICERS



DON FARQUHARSON  
*Business Manager-Treasurer*



HARRY C. BISER  
*Director, Admissions*



CATHERINE M. ATKINS  
*Registrar*



ROBERT W. SHAW  
*Director, Evening College*

## QUEENS COLLEGE FACULTY 1960-1961

Audrey M. Adams, *History; Librarian*  
 Thelma Albright, *English*  
 Anne K. Alexander, *Music*  
 Herbert E. Babb, *Psychology*  
 William Beidler, *Philosophy*  
 Elizabeth McD. Black, *Education*  
 Charles E. Brewer, Jr., *Economics*  
 Harry L. Brown, Jr., *Education*  
 C. Blue Calhoun, *English*  
 Roberta T. S. Chalmers, *English*  
 Jane F. Coker, *Music*  
 Kathryn Cooper, *Music*  
 Elizabeth C. Cumming, *English*  
 Stuart D. Currie, *Bible and Religion*  
 Sarah I. Dunlap, *Home Economics*  
 Nancy L. Eagle, *Music*  
 Jack H. Fehon, *Biology*  
 Margaret Gaston, *Music*  
 Ann S. Gebhardt, *Art; Dean of Students*  
 Kurt R. Glaubitz, *Music*  
 Charles O. Hadley, *Speech and Comparative Literature*  
 Grace M. Hall, *Geography*  
 M. Joyce Hayes, *Psychology*  
 John A. Holliday, *Music*  
 Hughes B. Hoyle, Jr., *Mathematics and Physics*  
 F. Virginia Irons, *Home Economics*  
 Eleanor L. Jenkins, *Mathematics*

Marie E. Johnson, *Music*  
 Donald E. Lewis, *Chemistry*  
 Peggy P. McDonald, *Physical Education*  
 Mildred M. McEwen, *Chemistry*  
 Ruth R. Magher, *Physical Education*  
 Albert R. May, *Music*  
 Mildred L. Miscally, *Journalism; Director of Public Relations*  
 Dougald McD. Monroe, Jr., *English*  
 Philip A. Moose, *Art*  
 John D. Morrison, *Music*  
 Sarah M. Nooe, *Biology*  
 Edward W. Pohlman, *Sociology*  
 Norris W. Preyer, *History*  
 Caroline G. Richardson, *French*  
 C. Louise Salley, *History*  
 George A. Shealy, *Art*  
 Robert A. Snyder, *Music*  
 George A. Stegner, *Music*  
 Summers Tarlton, *Religion*  
 Mary Lee Taylor, *Bible and Religion*  
 Josie C. Tomlinson, *Spanish*  
 Edmund T. Weiant, *German and Russian*  
 Sarah M. West, *Secretarial Practice*  
 Ruth Louise Whyte, *Art*  
 C. Glyn Williams, *Economics*



Adams  
Brown  
Fehon  
Hoyle  
Magher  
Pohlman  
Larlon

Albright  
Calhoun  
Gaston  
Irons  
May  
Preyer  
Taylor

Alexander  
Coker  
Glaubitz  
Jenkins  
Miscally  
Richardson  
Tomlinson

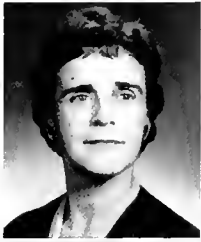
Babb  
Cooper  
Hadley  
Johnson  
Monroe  
Salley  
Weiant

Beidler  
Cunning  
Hall  
Lewis  
Moose  
Shealy  
West

Black  
Currie  
Hayes  
McDonald  
Morrison  
Snyder  
Williams

Brewer  
Eagle  
Holliday  
McFwen  
Nooce  
Stegner  
Whyte

# S T A F F



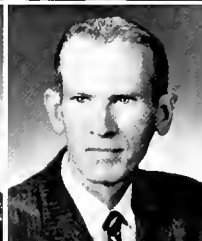
INGRID M. ALEXANDER  
*Resident Nurse*  
MYRA C. BRISTOL  
*Secretary, Evening College*  
MERLE CUMBERWORTH  
*Secretary to Dean of the College*



DOROTHY G. DENMAN  
*Assistant Librarian and Cataloger*  
ROBERT P. EISELE  
*Food Service Director*  
GERTRUDE G. GILL  
*Secretary, Music Department*  
DOUGLAS M. GLASGOW  
*College Physician*



LORENA A. GOELLER  
*Resident Counselor, Long Hall*  
CARRIE B. GREEN  
*Resident Counselor, Belk Hall*  
LEONORA T. HADLEY  
*Library Assistant*  
MADELINE S. HEARN  
*Dining Hall Supervisor*



PEARL N. HILL  
*PBX Operator*  
LOIS R. HILTON  
*Administrative Assistant,  
Business Office*  
IRENE T. KELLY  
*Manager, Student Store*  
DONALD D. MCNEILL  
*Assistant to the Treasurer*



MARY ANN MOFFETT  
*Secretary, Admissions Office  
Resident Counselor, Morrison Hall*  
ADELINE W. MORTON  
*Secretary to the Dean of Students*  
PEGGY B. POWELL  
*Secretary, Alumnae Office*  
JEAN L. RAYBURN  
*Admissions Counselor*



ASHBY H. ROUSSEAU  
*Assistant Dean of Students  
Resident Counselor, Harris Hall*  
ROBERT ROWE  
*Manager of Dining Hall*  
LOUISE T. RUIDISILL  
*Secretary to the President*  
ANN R. SANDERS  
*Director of Alumnae Affairs*



FRANCES D. WALTER  
*Secretary to the Assistant to  
the President*  
JANE G. WAYBURN  
*Assistant, Public Relations Office*  
DOROTHY A. WENTZ  
*Secretary, Business Office*



*"I think you stacked the deck!"*



*"HOW!"*



*"Music, Maestro!"*

## FACULTY OFF GUARD



*"If you want anything done right, do it yourself!"*

*"We're off to the club to show the pros how it's done."*



*"H<sub>2</sub>O is the only thing they all seem to know!"*



*"Which way to the laundromat?"*



*our separate paths to knowledge . . .*



- *foreign languages*
- *art*
- *psychology*
- *home economics*
- *faculty-student conference*
- *music*







*"Grateful for thy guiding hand . . ."*



"I'd rather be a senior than a multi millionaire!"

Mr. Hadley spoke to us on Senior Recognition Day. I entered the chapel feeling quite unlike a senior and left realizing that I was about to complete four years of work.

In high heels, I carried lesson plans and arithmetic papers to the parking lot each morning and drove to school to greet eager faces. It was hard to get used to the "Miss" in front of my name—sort of made me feel a little *too* grown up.

Who said we were tired old seniors? Our satire for Stunt Night received honorable mention from the judges, and we were runners-up for the class basketball tournament. Ann, Harriet, Patsy, Kit, and Kay were chosen to take part in the traditional Boar's Head ceremony. Exciting letters arrived every day. Some of us were accepted for graduate school, some for various jobs and teaching positions, and some received pamphlets on bridal gowns, china patterns, and honeymoon resorts.

I was beginning to think I couldn't graduate, when all the activity hours were closed before I registered second semester, but I found that gardening was still open and signed up for it.

With Mr. Brewer, our class sponsor playing host at the senior dinner, we started Senior Week with a bang. We enjoyed smoking in the dining hall and calling up various underclassmen to perform for us. Local civic clubs as well as the underclassmen entertained in our honor, we had a Hawaiian Breakfast in the dining hall and our "Skip Day" picnic at the river.

After national teacher and graduate record exams, I got ready for my last exams at Queens. At the Installation service in Belk Chapel and Move-up day in Ninniss, we watched the juniors take over the places we were leaving. In some ways it seems that only yesterday we entered as freshmen, but sometimes we feel we have been here all our lives. We have seen Queens move into back campus, and we've grown a lot ourselves—and now we're "only embers where we once were sparks."





CAROLYN ROGERS, *Vice-President*, almost stepped on the seal, but Betsy MUNN, *Secretary-Treasurer*, caught her just in time.



GAIL RUTHERFORD, *President*

## SENIORS

KIT LYON, *RA Representative*, and LINDA HARDEE, *Stunt Night Co-Chairman*. (Not pictured: MARIANNA CHRISTIAN, *Stunt Night Co-Chairman*.)



ADELAIDE MOLL ANDERSON  
Morganton, N. C.  
*English, A.B.*



EMILIE ANN ANDERSON  
Richmond, Va.  
*Chemistry, A.B.*

NANCY JOYCE APPERSON  
Winston Salem, N. C.  
*Sociology, A.B.*

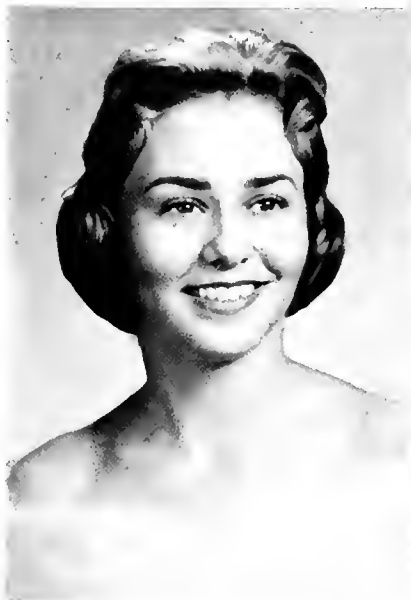


BEVERLY ANN ATKINS  
Asheville, N. C.  
*Home Economics, A.B.*

CATHERINE IRENE BARKER  
Jacksonville, Fla.  
*Comparative Literature, A.B.*



PATRICIA PAYTON BELL  
Charlotte, N. C.  
*English, A.B.*



CLEONE IRENE BLAIR  
Charlotte, N. C.  
*Home Economics, A.B.*



VIRGINIA LEE BOPP  
Miami Springs, Fla.  
*Art, A.B.*  
(Degree to be awarded in 1962)



RACHEL SUSAN BROOKS  
Greensboro, N. C.  
*Bible and Religion, Sociology, A.B.*



## SENIORS

ELIZABETH FLORENCE CARMICHAEL  
Winston-Salem, N. C.  
*English, A.B.*



MARIANNA RAMSEY CHRISTIAN  
Williamsburg, Va.  
*Art, A.B.*



MARTHA CLEMMONS  
Columbus, Ga.  
*History, A.B.*



JUANITA McLEOD CLONTZ  
Charlotte, N. C.  
Nursing, B.S.



BETTY RAYE COX  
Williamsburg, Va.  
Psychology, A.B.



SARA FRANCES CRAIG  
Jacksonville, Fla.  
History, A.B.

*Mr. Hadley speaks at Recognition Day . . .*

HELEN LOUISE CRANFORD  
Elkin, N. C.  
Sociology, A.B.

CAROL ANNE DEETS  
Miami Springs, Fla.  
Nursing, B.S.

VIRGINIA SMITH ELLINGTON  
Belmont, N. C.  
History, A.B.





JOSEPHINE ALL ESKRIDGE  
St. Simon's Island, Ga.  
*English, A.B.*



SUSANN FINKLEA  
Florence, S. C.  
*Economics, A.B.*



JUDITH JO FISHER  
Raleigh, N. C.  
*Bible and Religion, A.B.*

*class project . . . blazer sale . . .*

SUSAN JANICE FOWLER  
Dunn, N. C.  
*Nursing, B.S.*

CORA HELEN FRY  
Winchester, Va.  
*Home Economics, A.B.*

MARTHA STEPHENS GILLIAM  
Charlotte, N. C.  
*Home Economics, A.B.*





NANCY ANN GRAY  
Spartanburg, S. C.  
*Home Economics, A.B.*



MARY BRUCE GRIMSLEY  
Fairmont, N. C.  
*Music Education, B.Mus.*



MARGARET JOHNSTON GURLEY  
Charlotte, N. C.  
*English, A.B.*



## SENIORS

PAISY JO GUYER  
Charlotte, N. C.  
*Bible and Religion, English, A.B.*



LAURETTA CAROLE HALL  
Chattanooga, Tenn.  
*History, A.B.*



SARAH LINDA HARDEE  
Dunn, N. C.  
*Art, A.B.*





NANCY CAROLYN HITCHCOCK  
Danville, Va.  
*Mathematics, A.B.*



NANCY EUDORA HOPKINS  
Charlotte, N. C.  
*Chemistry, A.B.*  
(Degree to be awarded in 1962)



EVELYN JUNE HORNER  
Blytheville, Ark.  
*English, A.B.*  
(Degree to be awarded in 1962)



ELIZABETH CAROLINE JENKINS  
Castle Hayne, N. C.  
*Psychology, A.B.*

## SENIORS



LUCILLE FINCH JONES  
Charlotte, N. C.  
*Art, A.B.*



CYNTHIA ANN KING  
Kingsport, Tenn.  
*Art, A.B.*



MARGARET ANN LEE  
Orlando, Fla.  
*History, A.B.*



BETSY CAROL LINN  
Landis, N. C.  
*Home Economics, A.B.*



KATHERINE DENISE LYON  
Arlington, Va.  
*Psychology, A.B.*

*we learned—both as students and teachers . . .*

ANNE CUNNINGHAM McCUTCHEN  
Spartanburg, S. C.  
*English, A.B.*

PATRICIA ANN McDANIEL  
Rutherfordton, N. C.  
*Mathematics, A.B.*

MERRY JAYNE McMICHAEL  
Litchfield, Ohio  
*English, A.B.*





JULIA MARILYN MACQUEEN  
Little Rock, S. C.  
*Biology, A.B.*



KATHRYN TRACY MACK  
Statesville, N. C.  
*Comparative Literature, Psychology, A.B.*



AGNES ELIZABETH MARKS  
Richmond, Va.  
*Music, A.B.*

*no phone duty after spring vacation . . .*

MARILYN LEE MASON  
Charleston, W. Va.  
*Music, B.Mus.*

CLAIRE WALSH MERCER  
Charlotte, N. C.  
*History, A.B.*

MARTHA IRMA MIDDLEBROOKS  
Macon, Ga.  
*History, A.B.*



ELIZABETH EUGENIA MUNN  
Pamplico, S. C.  
*Biology, A.B.*



LORETTA LEE MYERS  
Danville, Va.  
*Sociology, A.B.*



JACQUELYN REID NELLY  
Belmont, N. C.  
*Nursing, B.S.*



## SENIORS

CATHERINE SIEGALI PFEIFER  
Charlotte, N. C.  
*Mathematics, A.B.*

MARIE WAKEHAM PENDLEY  
Charlotte, N. C.  
*Nursing, B.S.*



ANN LAMPLEY PHARR  
Davidson, N. C.  
*Sociology, A.B.*





GAIL CARTER PRESSON  
Charlotte, N. C.  
*Art, A.B.*



CAROLYN ANNE ROGERS  
Bristol, Tenn.  
*English, A.B.*



SUE FIELDS ROSS  
Fayetteville, N. C.  
*Mathematics, A.B.*



GAIL GENEVIEVE RUTHERFORD  
Valdese, N. C.  
*Mathematics, A.B.*

## SENIORS



MARGUERITE RAY SEAY  
Richmond, Va.  
*English, Psychology, A.B.*



SUSAN JACQUELINE SHAW  
Charlotte, N. C.  
*Music Education, B.Mus.*



HARRIET ERWIN SLOOP  
Wilkesboro, N. C.  
*English, A.B.*



CAROL ANN SPEAKE  
Spartanburg, S. C.  
*English, A.B.*



LAURA KATHLYN SPRINKLE  
Winston Salem, N. C.  
*Psychology, A.B.*

*"at last we can drive" . . . senior privilege . . .*

HENRIETTA MACKINNON TAYLOR  
Ayden, N. C.  
*Spanish, A.B.*

LINDA ADAIR THOMPSON  
Salisbury, N. C.  
*Biology, A.B.*

LIZABETH MOLLE THOMPSON  
Greenville, S. C.  
*Mathematics, A.B.*





GENIE VANCE  
Bristol, Tenn.  
*English, A.B.*  
(Degree to be awarded in 1962)



RUTH ANN VANDIVER  
Spartanburg, S. C.  
*Music Education, B.Mus.*



MARY JACQUELYN VAUGHAN  
Winston-Salem, N. C.  
*Spanish, A.B.*

*"don't step on the seal" . . . our tradition . . .*

MARGARET DOYLE WALTON  
Jacksonville, Fla.  
*Biology, A.B.*

SALLY McCLAMMA WEEKS  
Lakeland, Fla.  
*English, A.B.*

ELLIE JANE WEST  
Statesville, N. C.  
*Home Economics, A.B.*





MARY ELIZABETH WHITE  
Richlands, Va.  
*Mathematics, A.B.*



MARY LEE WHITE  
Williamston, N. C.  
*Bible and Religion, A.B.*



FRANCES TROUTMAN WHITENER  
Charlotte, N. C.  
*Chemistry, A.B.*



## SENIORS

LYNDA SUE WILKINSON  
Charlotte, N. C.  
*Music Education, B.Mus.*

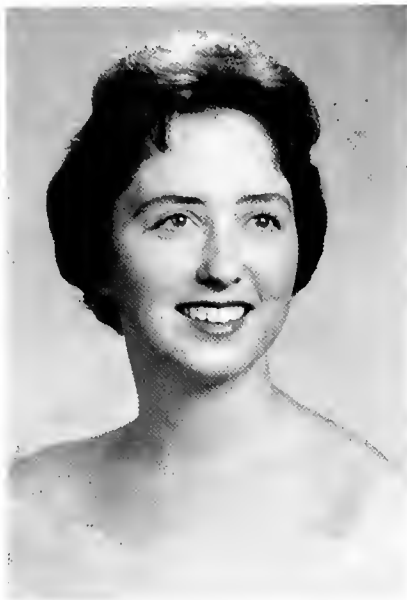


RUTH KIRKLAND WILKES  
Atlanta, Ga.  
*Bible and Religion, A.B.*



SANDRA LYNN WILLIAMS  
Rutherfordton, N. C.  
*History, A.B.*





JOYCE ELEANOR WINGATE  
Charlotte, N. C.  
*Bible and Religion, Sacred Music, A.B.*



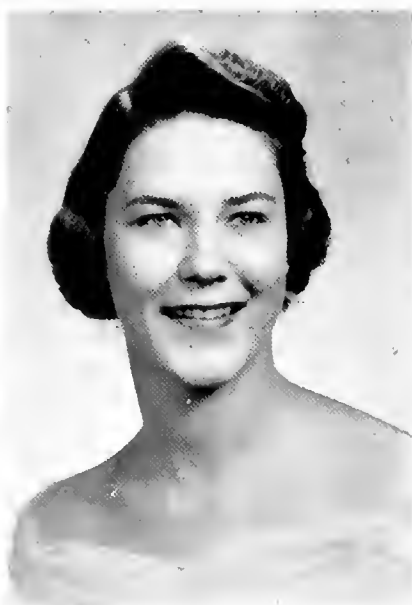
MARGARET NAN WOODHAM  
McColl, S. C.  
*Home Economics, A.B.*

NOT PICTURED

*Carol Cathey Kohar Jones*  
*Jane Carolyn Dudley Frances Armstrong Padgett*  
*Helen Plasterer Fries Margaret DeWitt Park*  
*Celia Overton Houston Eleanor Ruth Starnes*  
*Frances Catherine Jerman*

ROSALYNN WOODWARD  
Eastman, Ga.  
*English, A.B.*

EVELYN LEE YELTON  
Rutherfordton, N. C.  
*English, A.B.*



## DANA SCHOLARS

Appointment as a Dana Scholar is the highest honor available to an undergraduate student at Queens and recognizes superior achievement at the college level. Scholars are chosen from the sophomore, junior, and senior classes.

The first year of this program, provided by Mr. Charles A. Dana of New York, manufacturer philanthropist, was very successful. Mr. Dana stipulated that the recipients of the Dana Scholarships participate in a seminar at their respective class levels and also serve as scholar assistants to faculty members in their chosen field.

The program was begun this year with a seminar for the sophomore Dana Scholars. Under the guidance of Mr. Currie and Mr. Holliday, their study of the Renaissance was approached mainly through the art, literature, and music of that period.



DR. WALKER and MR. DANA

### *Sophomore scholars study Renaissance*

*Seated:* Linda Goodman, Jo Ann Jones, Nancy Cook, Ruth Wilkes, Harriet Sloop, Ina Rose Edwards, Susan Abernethy, and Ann Bloodworth. *Standing:* Kay Davis, Nancy Mayfield, Suzanne MacRae, Janet Judd, Janet Allison, Becky Garrison, Anne Holmead, Sue Camlin, and Beth Rivers. *Not pictured:* Patsy Arcott, Mary Campbell, Sara Craig, Judy Fuller, Nancy Quillen, Sue Ross, Ruth Scholten, and Paige Young.



*"Tune our ears to hear that chime . . ."*



I first realized I was a junior last spring when our class "moved up" to take its place in the balcony of Nin niss for a year of wondering what was going on in student assemblies. I heard Ann Van, but I only saw the person in front of me.

I started questioning things that either had no answers or else were matters which I had to decide for myself. To hear the noise on hall 2B in Harris, no one would ever believe we studied, but you should have heard us in Belk last year!

Much to our disappointment, Stunt Night slipped by us again, but I'll never forget Pattie in her hair dryer playing bridge on the stage—"What's your game?" Jane Sanders was in charge of publishing the Student Directory for our class project, and I was in the group that sold the remaining copies door-to-door the night we found out that our CORONET bill was sixty instead of thirty dollars. In December, Linda and her Independent Reading Program Committee presented "Our Town."

Alacia came back to us after a semester at Georgia, and we promptly elected her secretary-treasurer of the class to replace Mary Louise who transferred to Mary Baldwin.

Making friends with the freshman class was a big part of our fun this year. Their big production of the "Freshman Follies" made us proud that they were our "sister class." I was never too busy to enjoy their visits in our dorm, especially when they marched up the hall singing, "Next to the freshmen, we love the juniors!"

Elections were vital to us this year because this time, we, the juniors, would be the "big leaders" for 1961-62. Ruth, Linda, Jean, Sue, and Virginia will head the major organizations next year; and our efficient junior class president, "Annie-Bee," will serve as chairman of "Judy Board." We will all take on our new responsibility with enthusiasm, hoping to leave Queens a spirit and a unity.





JOANNE JONES, *Vice-President*, and ALACIA LEE, *Secretary-Treasurer*, sell Student Directories in the Rec Room.



ANN BLOODWORTH, *President*

## JUNIORS

JUDY BLACK, *Class Representative to RA*, IDA JOHNSON, and MARGARET BLEVINS, *Co-Chairmen of Stunt Night*, are hard at work—as usual!



*. . . juniors served breakfast-in-bed . . .*

SUSAN WOMBLE ABERNETHY  
PATRICIA GAYNOR ARSCOTT  
HARRIET BOYD BARROW



DORIS EVELYN BEAM  
RAE ELLEN BEEBE  
JUDITH LOCKE BLACK



MARGARET McIVER BLEVINS  
ANN FRANCES BLOODWORTH  
NANCIE BROOK BRADY



MARCIA LUCRELLA BRINKLEY  
BERNICE JOANNA BROOKS  
RUBY MARLENE BROOME



SANDRA JEAN CANNON  
FRANCES LINDER CARTER  
LINDA GEORGE CASHWELL



# JUNIORS

MARTHA MARIE CLYBURN  
CAROL HELEN COCHRAN  
MARY LOUISE COINER



SUSANNA LINTHICUM COLEY  
NANCY GRAY COOK  
MARY ALICE CRAIG



JUDITH RAY CROTTS  
MYRA LOU DAILEY  
CAROLYN CLARA DOBBINS



SUSAN DOUGLAS  
CORNELIA ELIZABETH DUNWOODY  
INA ROSE EDWARDS



EVELYN FAIRES  
CORAH ANN FISCHER  
MELINDA CONNELL GOODMAN





*. . . sponsored sale of Student Directories . . .*

MARILEE GURCOU  
MARGARET MADELINE HAHN  
JOANN HILL



ANN KATHERINE HOBBS  
MARY PEARL HOPKINS  
JEAN KAROL HUDDLESTON



DOROTHY LOUISE HUDSON  
SARAH ANN JENNETTE  
IDA ELIZABETH JOHNSON



HELEN JOANNE JONES  
BASILIKE PETER KARAGIANNI  
JUDITH ANN KOEIMEL



SUSANNE BERNICE LANE  
KAY HILTON LONG  
MARIE ELLIOT McCLURE



*. . . sat in the balcony at student assemblies . . .*

MARY MOFFETT McCLURE  
SARA SWANN McLAUGHLIN  
FLORA CHRISTIAN McNAIR



JANE ELIZABETH MAGNAN  
GAIL DEANNA MERRELL  
SUZANN SUTTON MORTON



SARA BUTLER MULLIS  
NANCY MOORE NANNEY  
RAMONA ELIZABETH ORTA



LINDA ELLIS PEGRAM  
JUDITH PAGE PRESTRIDGE  
PATSY LONG PRICE



LANE SUMMERS ROCKETT  
MARLAN SMITH ROGERS  
MARY VIRGINIA ROSE



# JUNIORS

RUTH CHRISTINA SCHOLLEN  
REBECCA WHITE SHALTER  
CAROL MARIE SHIRLEY



PATRICIA MOORE SIMS  
MARION GENE STALLWORTH  
JANICE HARRIS STEWART



JANE FYLER TALLMAN  
REBECCA ANNE THOMPSON  
SHU MEI WANG



BARBARA HARRISON WEST  
MARGARET JAMESON WHITE  
PHYLLIS ANN WHITENACK



HARRIETT ELLIOTT WHITLEY  
PEGGY ELAINE WIRIDEN  
MARTHA WOODS



**NOT PICTURED**

- Nancy Carolyn Alexander
- Trula Sutton Booth
- Mary Stewart Covington Bradford
- Ruth Goldman Cohen
- Mary Elizabeth Fisher
- Wanda Faye Garmon
- Judy Bingham Girvin
- Nancy Coe Hall
- Yvonne Louise Huskey
- Sally Jean Jefferys
- Mary George Karsins
- Alacia Jane Lee
- Helen Lawrence Pearre
- Ann Arrington Petree
- Sarah Williamson Purvis
- Jeannette Dillard Robinson
- Jane Marie Sanders
- Marie Wilkins Sawyer
- Anita Louise Warlick

*"Gladly do we lift our voices . . ."*



"And now ain't it great to be a sophomore?" I returned again for Orientation Week, but this time I knew every *thing* about Queens and I was ready to tell *my* advisees what time we eat breakfast and where we get our mail. Other discoveries were that our curtains from Watkins wouldn't fit our windows in Belk and that phone duty was lots of fun since I didn't have to run upstairs every time the phone rang.

A call came from Davidson, and I realized I had upper-classman privileges when I met him—not in Burwell, but in the lounge of my dorm—and on a week night, to boot! No one told me when to be in my room, and for a few nights I stayed up till all hours just to prove to myself I could keep my lights on and smoke in the room.

Betsy and Rosemary told us their scheme, and we were off to the basement of Carol Hall to wait on the "rats." The rest of the week, we sophs enjoyed being big wheels and ordering the frosh around. Sometimes during closed study we marched around the freshman dorms chanting "Cheer up, freshmen, the worst is yet to come!"

Helen stole the show at Stunt Night, but with Rachel and Patterson and their version of the typical Queens-Davidson romance, our western skit took the trophy.

After the Boar's Head Dinner I joined the ranks to tell Dr. Walker a secret—that Jock and I were pinned. Later that same night I gave his pin back!

When we returned from Christmas vacation, I was chosen to serve as a hostess in the dining hall. Besides having to sit in the same seat three times a day for six weeks, I lost ten pounds because every time I started to take a bite someone wanted more of something, and I had to raise my hand. By the time my table had enough of everything, it was time to order dessert, and during dessert I had to pour coffee and order more milk. Finally, I ate my dessert and headed to the Y Store for my supper.

When I learned that all the required courses for my major would be taught in 1968, I decided to major in English; then I learned that English classes met at eight a.m., so I changed my major to suit my sleeping habits.

Basketball tournament time came around and I put on my sweatshirt and shorts, fell, and skinned my knee, but Mary and Angie chalked up enough points to make up for my clumsiness.

And, gee, it was "great to be a sophomore!"





MAYWOOD NISBET, *Vice-President*, and RELLA LANCASTER, *Secretary-Treasurer*.

## SOPHOMORES

KAY TAYLOR, *President*

SULA EVANS, *Class Representative to RA*; ANN PORTERFIELD, *Co-Chairman of Stunt Night*; BETSY HUTCHINS, and ROSEMARY CLOWER, *Co-Chairmen of Rat Week*, talk things over in the Y-Store. *Not pictured: KATHIE WRIGHT, Co-Chairman of Stunt Night.*



NANCY FLEMING ABEL  
 VIRGINIA ADDINGTON  
 MIRIAM MUNDY ALLEN  
 JANET HERRING ALLISON



BRENDA CAROLE BLACKWELDER  
 VALERIE ANTRA BURNIE  
 ANITA McILHENNY CAMOON  
 SHEILA SUE CAMLIN



MARY PAULINE CAMPBELL  
 BRENDA LEE CARPENTER  
 SALLY JACKSON CASON  
 JEANNE MARIE CHAPMAN



DAWN STEWART CHAPPELL  
 ROSEMARY CLOWER  
 JOANNE COOPER  
 HELEN BIDDLE CREVENSTEN



CATHERINE McARTHUR CURRIE  
 BETTY JANE DANIEL  
 KAY SCHULER DAVIS  
 NANCY LEE DeWITT



PETRA JANE DICKINSON  
 ROSANNE EUBANKS  
 SULA ANNE EVANS  
 DEANNA RAWLINGS EWING



LINDA ELIZABETH FARRAR  
 JANET MARGARET FERRAN  
 MARTHA LITTLE FISHER  
 SUSAN FOSTER



# SOPHOMORES

ALICE JEANNE FREEMAN  
 JUDITH MARIAN FULLER  
 SUSAN PALMER GABB  
 REBECCA SHAPARD GARRISON



ELEANOR BURRUSS GARST  
 GENE LEWIS GIVHAN  
 BARBARA AIMAR GOODWIN  
 JULIA ELIZABETH GREEN



MARY LEE HALE  
 SARA IRENE HARRINGTON  
 KATHLEEN HELMS  
 ALICE GAMMON HEMPHILL



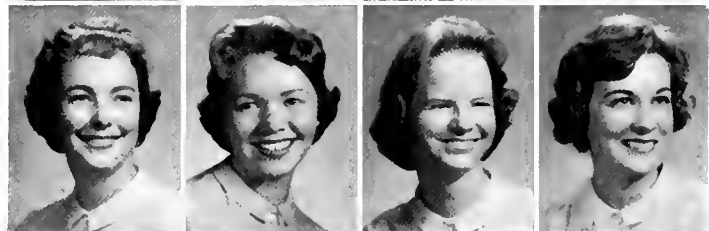
PEARL ELIZABETH HILL  
 BONNIE TALLEY HIMEBAUCH  
 ANNE HILTON HOLMEAD  
 ELISABETH JOHNSON HOOK



ELIZABETH ERWIN HUTCHINS  
 SLOAN LENTZ INGRAM  
 BARBARA MAE JACKSON  
 HELEN CELESTE JACKSON



NINA ELIZABETH JOHNSON  
 JUDITH ANN JONES  
 JANET ELIZABETH JUDD  
 MERIAM FOWLER KILNER



RELLA JEAN LANCASTER  
 KAROL JEAN LARSON  
 ISABELLE B. LEWIS  
 MILDRED EMILY LLOYD





JESSIE FLANN MCCORMAC  
 JOYCE MARIE MCCUBBIN  
 SARAH LOUISE MCCABRY  
 ANNE PRINGLE MCGEE



SUZANNE HAYNES MACRAE  
 ALICE WINGO MARKS  
 JULIA DAVIDSON MASSLY  
 MARY NANCY MAYFIELD



MARGARET LEE MILLER  
 NANCY LEE MILLOCK  
 MARTHA LOUISE MOISE  
 WILLIE MARTHA MORRISON



HELENE NICHOLS  
 MAYWOOD MALLARD NISBET  
 ELIZABETH MCFADDIN ODIORNE  
 LOUISE REID O'KELLY



RACHEL ELIZABETH PATRICK  
 NANCY ANNE PATTERSON  
 SALLIE SUSANNE PATTERSON  
 ELIZABETH PECK



GYPSEY ANN POOL  
 MARY ANN PORTERFIELD  
 EUGENIA ANN POWEL  
 JOAN HAMILTON POWELL



MARY ELLEN QUICK  
 NANCY ANN QUILLEN  
 CAROLYN BAKER RENTZ  
 MARY ELIZABETH RIVERS



# SOPHOMORES

MARY SUSAN RUTTER  
 PAMELA GRAYCE SCARBOROUGH  
 SARA CAROLYN SHELLEY



MARJORIE LOUISE SMITH  
 JOANNA AUGUSTA SPRINGS  
 SUZANNE HAMILTON STEDMAN  
 PATRICIA STELL



CAROLINE LENORA STILES  
 MAMIE ANN SUTHERLAND  
 MARTHA SUZANNE SWAIN  
 KATHRYN MOORE TAYLOR



ELIZABETH LEE THOMAS  
 SANDRA SUE TRICKETT  
 CYNTHIA PARROTT TROBAUGH



JUDITH IRENE WARD  
 EMILY ANN WEATHERLY  
 ROBERTA ROWE WEATHERS  
 PAMELA JAMES WENHAM



MARY CAROLYN WHITESIDE  
 ANGELA WILLIAMS  
 SALLY MCGREGOR WILLIAMSON  
 JO ANN WINFREE



SARA BLANCHE WOODARD  
 MILDRED KATHLEEN WRIGHT  
 MARTHA PAICE YOUNG



## NOT PICTURED

*Janet Hope Crickmer  
 Marcia Irving Gay  
 Ann Snyder Howerton  
 Barbara Frances Johnson  
 Alice Julene King  
 Harriette Agnes McMichael  
 Louise Fuller Royal  
 Catharine Cecelia Williams*



Seated: Nancy Abel, Susan Gabb, Beth Rivers, Maywood Nisbet. Standing: Ann Potterfield, Mary Campbell.

## VALKYRIE

A tap on the shoulder . . . six sophomores chosen for Valkyrie . . . breakfast-in-bed and fifteen gallons of orange

juice . . . a trip to see Santa with a group from Thompson Orphanage . . . ushering at *Our Town* and the White Gift Service . . . "Such leaders among you have been found."

## QUEENS SCHOLARS

First row: Phoebe Jane Pierce, Louise Gittings, Sally Jenkins, Jane Lawther, Glenina Holliday. Second row: Nancy Hutcheson, Carol Robinson, Katherine Oehler, Jean Norris, Charlotte Gaulding, Anne McLaughlin, Carolyn King.



*"Light high visions in thy daughters . . ."*



On September the eighth I arrived! Orientation Week was filled with speeches, tests, and jam sessions. I learned what to wear, how and where to wear it, and not to go to town in bermudas! Saturday night I met a future date possibility in Burwell before the Freshman Dance. We met our faculty advisors at dinner Sunday, and it was fun after I realized she was as nervous as I was.

Classes began, and I was soon amazed at all I had learned. The atomic weight of helium is four, the word *and* appears thirty one times in Luke 3:1-23, and a treadle sewing machine won't backstitch. A few practical tips on studying taught me that a pillow under the typewriter and a flashlight after 11:30 p.m. made house council happier.

I had almost learned how to schedule my time, when all of a sudden everything was completely upset. After having pulled me out from under my bed, a ghostly looking sophomore marched me to Carol Hall where I was capped "Ratty Rat." A gruff voice behind me kept repeating, "What's your name, Freshman?" What a week!

Finally, I shed my rat cap and put on my glad rags for a round of rush parties. With a glued-on smile, I tripped from house to house, meeting a maze of Greek letters and too many people who all asked where I was from and how I liked Queens. Invitations were issued, re-issued, and after a week of indigestion and fingernail biting, I finally decided which one and pledged! From then on, every Sunday night I was glad to eat hot dogs or pizza and even help clean the kitchen.

Elaine and Ann really kept me busy painting "Bush" signs, making my costume, and practicing for Stunt Night, but when our satire about the first Thanksgiving won the gallery prize, I was glad I had been a small part.

In March, my class really put on a show! We had everything from Sally "The Bird" Wyatt to Bonnie the girl with voice and volume. A standing ovation from the student body proved their enthusiasm for our "Freshman Follies."

I put my raincoat over my bathing suit and juked up to Morrison Beach when the first signs of spring came around, and soon I had a sun tan to beat almost everybody on campus—except the girls in Morrison Dorm!

Looking back, I have learned that closed study is not necessarily intended for washing clothes or writing letters. I can properly sign out in Burwell, and talk knowingly about after-parties.

And, now looking to Belk Dorm, anticipating and knowing next year will present a greater challenge and still more fun . . . I drive away!





ANN ALDRICH, *Vice-President*; KENT ANDERSON, *RSC Representative*; JANE LAWTHIER, *Secretary-Treasurer*.



JEANNETTE PREVETTE, *President*.

## FRESHMEN

ANN ALDRICH and ELAINE JUBANYIK, *Stunt Night Co-Chairmen*, LAMAR DEAHL, *RA Representative*, and CLAUDIA JOHNSON, *QCA Representative*, compare their stuffed animals.



JANICE SHERRILL ADAMS  
 NANCY MAILEDIA ADAMS  
 JEAN NESBITT ALBRITTON  
 ANN DUNN ALDRICH



GENEVIEVE ALLORD  
 PRISCILLA ANN ALLEN  
 REIA ELIZABETH ANDERSON  
 VIRGINIA KENI ANDERSON  
 DIANA JANE ASHWORTH



GRACE JORDAN BAKER  
 LINDA ANN BATES  
 LUCINDA HOPE BAYLEY  
 JANF ELLEN BECKETT  
 MARTHA ANN BELL



MARY CAROLYN BERO  
 JANE LOUISE BLACKWELDER  
 FRANCES MARION BOHANNON  
 DORCAS GILBERT BOLICK  
 MARGARET NICHOLS BOWERS



GEORGIA CAROLYN BRADLEY  
 ANNE CARRINGTON BRIGHT  
 KATHERINE LAVERNE BROWN  
 VIVIAN ANNE BULLOCK  
 CAROLINE NEELY BURGIN



JOAN LOUISE CALHOUN  
 CAREN REVE CAMICIA  
 LILLIAN GEORGETTE CELLAR  
 SUE GARY CHALLEN  
 CHARLOTTE FRIERSON CHERRY



NANCY COLE CHOSTNER  
 DIANA RANDALL CHURCHILL  
 NANCY N. CLOFFELTER  
 MARY LOU COLLINS



# FRESHMEN

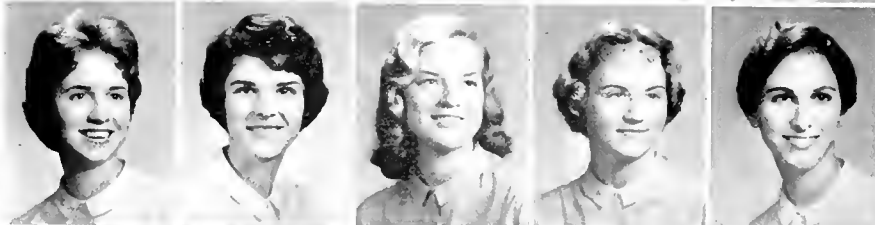
DOROTHY ANNE COOKE  
ELIZABETH ROBERTA COX  
SARAH ELIZABETH DAWSON  
ANN LAMAR DEAHL  
BEVERLY ANN DEAN



MARY AMELIA DEATON  
RAINSFORD DUBOSE DEDMAN  
LETTIE LEE DEKLE  
MARTHA CARREL DUERSON  
DARRELYN EDITH DUETCH



GEORGENA SUE DYER  
ANN EASON  
BEVERLY EVELYN ECKERT  
MARTHA ELIZABETH FAIK  
LINDA ROSE FEITLER



PATRICIA ANN FILES  
RENAE ELIZABETH FREEMAN  
BRENDA VIRL GAMM  
JANE GAMMON  
JUDY ALLEN GARDNER



LOUISA ALLEN GARLAND  
CHARLOTTE ANN GAULDING  
KATHLEEN BAKER GELZER  
ROBERTA LOUISE GITTINGS  
CAROL LYON GORMAN



GERALDINE CAROLINE GRAB  
ZENA KAY GRAFTON  
JUDITH CONNIE GRAY  
KATHERINE MICKLE GRAY  
ELIZABETH JEAN GREER





CAROL PORTER GRAY  
 JUDITH BERNICE GRIMSEY  
 MARGHERITE FLOYD HAGLER  
 ELIZABETH DIANE HALLMAN



FRANCIS NANETTE HARPER  
 LINDA FAY HASTINGS  
 GLENNA KIRKLAND HOLLADAY  
 MARGARET L. HOLLINGSWORTH  
 CAROLYN DAVIS HOUGH



DOROTHY ANN HUNSBERGER  
 JEAN McEWEN HUNTER  
 RACHEL MILDRED HUNTER  
 NANCY BARNSDALE HUTCHISON  
 PATRICIA ANNE HUGHINS



MARY PEDRICK ISOM  
 EMMA SUSANNE JACKSON  
 ALLISON JAMES  
 HARRIET SUSAN JAMES  
 SARA CELESTIE JENKINS



CLAUDIA FVELYN JOHNSON  
 MARY BEBECCA JOHNSON  
 PATRICIA KERR JORDAN  
 ELAINE MORTON JURANYIK  
 CAROLYN SNYDER KING



MARTHA HARDY LAMB  
 SANDRA VERNER LANSHART  
 SHARON KAY LANG  
 CAROLYN HARRIET LAWALL  
 JANE WYATT LAWTHIE



LINNEA BUTE LITAKER  
 VIRGINIA MAY LUCAS  
 VIRGINIA DARRIE McDONALD  
 CLAUDIA ANN McDOWELL



ANN EADS McGRATH  
 ANNE NIVEN McLAUGHLIN  
 DELLA JANE McMULLEN  
 ELIZABETH LAMBETH MARSH



FRANCIS MARION MAYS  
 ALICE HELEN METHESSEL  
 FRANCES ANN MILLER  
 FRANCES MILTON  
 MARY LEIGHTON MOFFETT



MARION LEA MORRIS  
 BONNIE ELIZABETH MYERS  
 FRANCES DIANE NEIGHBORS  
 FRANCES JEAN NORRIS  
 CAROL McLENDON NUNN



KATHRYN ANNE OEHLER  
 SALLY OGBURN  
 DOROTHY LILLIAN ONG  
 CONSTANCE LOU OYER  
 SARAH McALLISTER PARSONS



PAMELA SUSAN PEPER  
 PHOEBE JANE PIERCE  
 RACHEL PINKSTON  
 JUANITA BOYKIN PLOWDEN  
 JANET HARRIS PORTER



JEANNETTE CECELIA PREVETTE  
 SUZANNE PRINCE  
 KATHLEEN JOYCE RAINWATER  
 ELEANOR RAINSFORD RANDOLPH  
 ELIZABETH ANNE RICE



ELIZABETH B. ROBERTSON  
 PRISCILLA ANNE ROBERTSON  
 CAROL VIRGINIA ROBINSON  
 APRIL ELAINE ROYAL



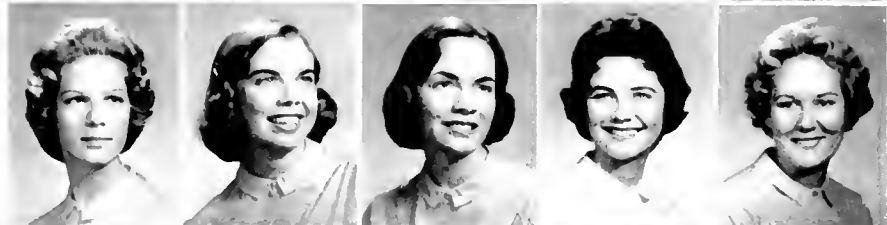
ELIZABETH CAROL RICKER  
CHRISTINE FLISSA SAFFORD  
ANN LIDBETTER SANDERS  
SHARON SCOTT



SUSAN ANN SCRUGGS  
MARGARET BERRYMAN SWEET  
ANNE HUNTER SHOWALTER  
ELIZABETH ANNE SELDGE  
IRMA SANDRA SLEVIN



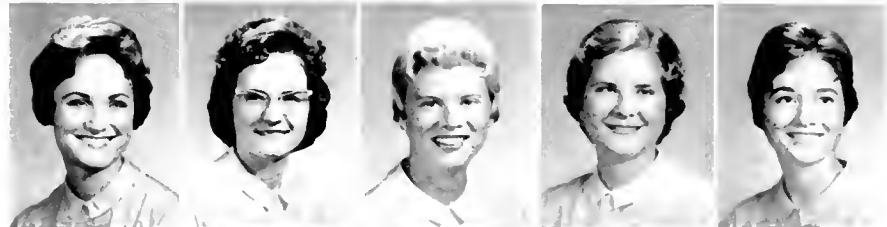
SUE BETH SLOCUM  
BETTIE KERFOOT SMITH  
ROSEMARY HOWARD SMITH  
RITA KAYE SOUTHER  
ANTHEA SPURLING



DOROTHY MARIE STAMEY  
ANN MARIE STEPHENS  
CYNTHIA KAY STROUPE  
MAE ELIZABETH THOMPSON  
LYNNE THURMAN



TINA THERESA TINSLEY  
FIDELIA ELLEN TOLLEY  
SUSAN GAIL TONNING  
NANCY DALTON TOWERY  
JENNIE KAY TRAVIS



MYRTLE JANE TRIVETTE  
LYNN SCROGGS VANCE  
MARY KAYE WAGNER  
MARTHA LUCILLE WATERS  
CAMELA UNDERHILL WELDON



JANE MCSHERRY WELLS  
EVELYN JANE WHITLEY  
MARY HARVEY WILSON  
SALLY ANN WYATT



NOT PICTURED  
Sylvia LaMarr Hastings  
Anne Cordelia Holliday  
Dorothy Varner Smith  
Martha Warren Watson



## ADVERTISING

*In our four years at Queens, each of us has the desire to walk across Selwyn Avenue to the Bus Stop and wait patiently for a ride uptown. We sit on the steps of Carol Hall and look at the campus—one block—and are amazed that so very much can go on in such a small area. Then we get uptown and see dif-*



*ferent faces, different clothes, and different surroundings. We go from store to store, buying—if we have the money—and learning—some of us for the first time—how to buy for ourselves. We live, we learn, we see the world in action—the world we will find each time we leave that block.*



# Senior Statistics

## ADELAIDE MOTT ANDERSON

PHI MU

RSC Representative (1), Treasurer (2), President (4); House Council (1); Dolphin Club (1); Phi Mu Secretary (2), Social Chairman (3), Chaplain (4); Valkyrie (2); SGA Secretary-Treasurer (3), First Vice-President (4); Judicial Board (3, 4); Alpha Kappa Gamma (3, 4); Orientation Committee (3, 4); Student Legislature (3, 4); Executive Committee (4); *Who's Who Among Students in American Universities and Colleges* (4).

## EMILIE ANN ANDERSON

ALPHA DELTA PI

Dean's List (1, 2, 3, 4); World University Service Campaign Chairman (2); Marshal (2, 3, 4), Chief (4); FAC (2); Alpha Delta Pi Scholarship Chairman (2), Executive Council (2); Orientation Committee (3); NSA Coordinator (3); Delegate to NSA Congress (3); Independent Reading Program Committee (3, 4); Student Legislature (3); Election Committee (3); Sigma Mu (4); Alpha Kappa Gamma (4); Self-Study Committee (4); *Who's Who Among Students in American Universities and Colleges* (4).

## NANCY JOYCE APPERSON

ALPHA CHI OMEGA

Spanish Club (1, 2); Alpha Chi Omega Charter Member (1), Secretary (2, 3), Rush Chairman (4); Art Service Club (2, 3); FAC.

## BEVERLY ANN ATKINS

PHI MU

Home Economics Club (1, 2, 3, 4); Publicity Chairman (2), Secretary-Treasurer (3), Secretary (4); Phi Mu Corresponding Secretary (3), Pledge Trainer (4); Dolphin Club (3, 4); Dean's List (3, 4).

## CATHERINE IRENE BARKER

ALPHA CHI OMEGA

Dean's List (1); Alpha Chi Omega Charter Member (1), Panhellenic Delegate (2), Rush Chairman (3); Panhellenic Council Social Chairman (2), Treasurer (3); RA Publicity Co-Chairman (2); FAC (2); CORONET Staff (2); Marshal (2); Art Service Club (2); Co-Chairman, Independent Reading Program Committee (3); University of Geneva (3); "Our Town" (4).

## PATRICIA PAYTON BELL

Wake Forest College (1).

## CLEONE IRENE BLAIR

ALPHA CHI OMEGA

Meredith College (1); Home Economics Club (3, 4); Alpha Chi Omega Recording Secretary (4).

## VIRGINIA LEE BOPP

ALPHA GAMMA DELTA

Dolphin Club (1, 2); RA Publicity Chairman (2); May Court (2); House Council.

## RACHEL SUSAN BROOKS

PHI MU

Class Treasurer (1), Secretary-Treasurer (2), President (3); House Council (1, 2); Handbook Committee (1); Spanish Club (1); FAC (2); Student Legislature (3); President of Harris Hall (4); RSC (4); Orientation Committee (4); Election Committee (4).

## ELIZABETH FLORENCE CARMICHAEL

ALPHA GAMMA DELTA

Spanish Club (1); Alpha Gamma Delta Corresponding Secretary (3); Pledge Trainer (4); FAC (4); Assistant Editor *Student Handbook* (4).

## CAROL CATHEY

Southern Seminary Jr. College (1).

## MARIANNA RAMSEY CHRISTIAN

CHI OMEGA

Dolphin Club (1, 2); RA Sophomore Representative (2), Junior Representative (3); Dean's List (4).

## MARTHA CLEMMONS

## JUANITA McLEOD CLONTZ

Presbyterian Hospital School of Nursing.

## ELIZABETH RAYE COX

PHI MU

Choir (1, 2, 3, 4); House Council (2); Phi Mu Corresponding Secretary (2), Vice-President (3); FAC (2, 3); RSC Secretary (3); President of Watkins Dormitory (4); May Court (4).

## SARA FRANCES CRAIG

ALPHA GAMMA DELTA

House Council (2, 4); Alpha Gamma Delta Assistant Treasurer (2); Westminster Fellowship (2); Dana Scholar (3).

## HELEN LOUISE CRANFORD

ALPHA CHI OMEGA

Alpha Chi Omega Charter Member (1), Second Vice-President (2), President (3); Panhellenic Council (3).

## CAROL ANNE DEETS

Presbyterian Hospital School of Nursing.

## VIRGINIA SMITH ELLINGTON

## JOSEPHINE ALL ESKRIDGE

CHI OMEGA

BSC (3); Dean's List (3).

## SUSANN FINKLEA

ALPHA DELTA PI

House Council (2, 3); FAC (2); Flier Staff (3).

## JUDITH JO FISHER

ALPHA DELTA PI

Alpha Delta Pi Best Pledge (1), Treasurer (3); Chairman of *Freshman Foolies* (1); FAC (2); QCA Chairman of Social Responsibility Committee (2); Chairman of Vespers Committee (3); Editor of *Student Handbook* (3); Election Committee (4); NSA Coordinator (4); Alpha Kappa Gamma (4); *Who's Who Among Students in American Universities and Colleges* (4); Dean's List (4); Student Legislature (4).

## SUSAN JANICE FOWLER

CHI OMEGA

Presbyterian Hospital School of Nursing.

## HELEN PLASTERER FRIES

Jacksonville University, Florida.

## CORA HELEN FRY

ALPHA GAMMA DELTA

Home Economics Club (1, 2, 3, 4); Choir (2); House Council (2); FAC (2); Alpha Gamma Delta Rush Chairman (3), President (4); Panhellenic Council (4).

## MARTHA STEPHENS GILLIAM

University of Tennessee.

## NANCY ANN GRAY

PHI MU

Home Economics Club (1, 2, 3); Phi Mu Vice-President (3).

## MARY BRUCE GRIMSLEY

ALPHA GAMMA DELTA

Choir (1, 2, 3); Alpha Gamma Delta Corresponding Secretary (3); FAC (3); Editor of *Student Handbook* (3); Publications Board (3).

## MARGARET JOHNSTON GURLEY

Sigma Upsilon (4).

## PATSY JO GUYER

CHI OMEGA

Brevard Junior College (1, 2); QCA Day Student Representative (3); FAC (3); DSC President (4); Alpha Kappa Gamma (4); Orientation Committee (4); SGA Executive Committee (4); Second Vice-President (4); *Who's Who Among Students in American Universities and Colleges* (4).



Miss Moffett and Margaret browse at

**REESE'S ANTIQUE SHOPS**

Gifts for Today—Heirlooms of Tomorrow  
 1029 Providence Road—120 West 5th Street  
 CHARLOTTE, N. C.

**HARDEE'S PHARMACY**

THE



DRUG STORE

Phone ED 3-7729

2909 Selwyn Ave.

**PENNEY'S**

ALWAYS FIRST QUALITY!

Always First Quality

We invite you to shop with us in complete ease and comfort.

We have a complete line of wearing apparel for the entire family, plus everything you need for your home.



JA 3-6404



Ah-so! Velly good food at

THE **MING TREE**

RESTAURANT

EVERY BITE A FRESH TREAT



Swinson FOOD PRODUCTS, INC.

ED 3-9881

Charlotte, N. C.

# Senior Statistics

## CAROLE LAURETTA HALL

KAPPA DELTA  
Kappa Delta Scholarship Award (3); Senior Class Prophet (4).

## SARAH LINDA HARDEE

KAPPA DELTA  
Kappa Delta Historian (2), Rush Chairman (4); *logos* Make-up Editor (3), Art and Humor Editor (4); Stunt Night Co-Chairman (4); President of Belk Dormitory (4); RSC (4).

## NANCY CAROLYN HITCHCOCK

PHI MU  
Spanish Club (1, 2); CORONET Sorority Editor (3), Senior Class Editor (4); Baptist Student Union (3); Phi Mu Treasurer (4).

## NANCY EUDORA HOPKINS

ALPHA GAMMA DELTA  
DSC Secretary (3).

## EVELYN JUNE HORNER

ALPHA CHI OMEGA  
Alpha Chi Omega Second Vice-President (3).

## CELIA OVERTON HOUSTON

Sigma Upsilon Award for Best Short Story (1); Sigma Upsilon (3).

## ELIZABETH CAROLINE JENKINS

Westminster Fellowship (1, 2); Art Service Club Secretary (2, 3); *logos* Circulation Manager (3), Poetry and Short Story Editor (4); Sigma Upsilon (3, 4), Secretary-Treasurer (4); Philosophy Discussion Group President (4); Methodist Student Fellowship President (4).

## FRANCES CATHERINE JERMAN

Salem College (1).

## KOHAR JONES

Washington University.

## LUCILLE FINCH JONES

George Washington University.

## CYNTHIA ANN KING

KAPPA DELTA  
Co-Chairman of Rat Week (2); Art Service Club (2, 3); Panhellenic Council Vice-President (3), President (4); Student Legislature (4).

## MARGARET ANN LEE

PHI MU  
Spanish Club (1, 2); Westminster Fellowship (1, 3); FAC (2); Dean's List (2, 3, 4); Phi Mu Assistant Rush Chairman (3), Rush Chairman (4).

## BETSY CAROLE LINN

ALPHA GAMMA DELTA  
Choir (1); Home Economics Club (2, 3, 4); Vice-President (3); Panhellenic Council (4); Social Committee (4); Orientation Committee (4).

## KATHERINE DENISE LYON

CHI OMEGA  
CORONET Staff (2); House Council (3); *logos* Staff (4); RA Senior Representative (4); Chi Omega Secretary (4); Dean's List (4).

## ANNE CUNNINGHAM McCUTCHEM

CHI OMEGA  
Choir (1); Flier Staff (2); Orientation Committee (3, 4); House Council (4).

## PATRICIA ANN McDANIEL

CHI OMEGA  
FAC (2); Home Economics Club (2); Chi Omega Co-Chairman of Rush Week (3), President (4); Flier Staff (3); Panhellenic Council (4); *logos* Staff (4); Chairman of Senior Week (4).

## MERRY JAYNE McMICHAEL

Choir (1); Mt. Union College (3); Sigma Upsilon (4); Methodist Student Fellowship (4); Philosophy Discussion Group (4).

## JULIA MARILYN MACQUEEN

ALPHA DELTA PI  
RA Class Representative (1), Treasurer (2), Vice-President (3), President (4); Dolphin Club (1, 2); Charlotte Panhellenic Award for "Most Outstanding Freshman" (1); Valkyrie (2); Co-Chairman of Rat Week (2); Photographer for CORONET (3); Orientation Committee (3, 4); CORONET Award for Outstanding Contribution (3); Student Legislature (4); Alpha Kappa Gamma (4); Biology Club (4); *Who's Who Among Students in American Universities and Colleges*.

## KATHRYN TRACY MACK

CHI OMEGA  
House Council (1); Vice-President of Class (1, 2); Chi Omega President (3); Elections Committee (3); May Court (3, 4); Panhellenic Council (3, 4); Social Committee Chairman (4); Orientation Committee (4).

## AGNES ELIZABETH MARKS

KAPPA DELTA  
Choir (1, 3, 4); FAC (2); Social Committee (2); Madrigal Group (2, 3); Kappa Delta Vice-President (2), President (3); Panhellenic Council (3); "The Old Maid and the Thief" (4); Dean's List (4); Senior Recital (4).

## MARILYN LEE MASON

ALPHA GAMMA DELTA  
Choir (1, 2, 3, 4); Westminster Fellowship (1); Delta Omicron Charter Member (2), Publicity Chairman (3), Treasurer (4); Senior Recital (4).

## CLAIRE WALSH MERCER

Sacred Heart Junior College (1, 2).

## MARTHA IRMA MIDDLEBROOKS

KAPPA DELTA  
FAC (3); University of Vienna (3).

## SARA BUTLER MULLIS

ALPHA CHI OMEGA

## ELIZABETH EULALIA MUNN

PHI MU  
House Council (2, 3); Biology Club (2, 3, 4); Phi Mu Treasurer (3); RSC Class Representative (3); Secretary-Treasurer of Class (4); CORONET Junior Editor (3), Freshman Editor (4).

## LORETTA LEE MYERS

PHI MU  
Stratford Junior College (1, 2); May Court (3); Phi Mu Secretary (3), Best Pledge (3).

## NANCY MOORE NANNEY

PHI MU

## JACQUELYN REID NEELY

ALPHA GAMMA DELTA  
Presbyterian Hospital School of Nursing.

## MARGARET DEWITT PARK

University of Michigan (1).

## CATHERINE STEAGALL PEELER

Duke University (1).

## MARIE WAKEHAM PENDLEY

Presbyterian Hospital School of Nursing.





Nancie bought her car

or

**FRANK WOODS PONTIAC**

522 South Tryon

FR 6-4871

Service in Charlotte for 25 Years

**THE HOSTESS SHOP**

specializing in  
wedding gifts and hostess gifts  
of all types

140 Charlottetown Mall

FR 7-2035



Carol shops here, and—because  
she's from Charlotte—she should know.

**MORRISON'S**

**JEWELRY AND GIFT SHOP**

705 Providence Road

ED 2-1605



Margaret always finds stylish  
clothes at—

**MELLON'S**

106-114 West Trade

**OPEN KITCHEN**



**BEST PIZZA IN TOWN**

1318 W. Morehead  
CHARLOTTE, N. C.

# Senior Statistics

ANN LAMPLEY PHARR  
PHI MU

GAIL CARTER PRESSON  
Meredith College (1, 2).

CAROLYN ANNE ROGERS  
PHI MU

House Council (1); Phi Mu Assistant Pledge Director (2), President (3); CORONET Staff (2); Panhellenic Representative (4), Vice-President (4); Vice-President of Class (4); Representative to *Going to College Handbook* (4); *logos* Staff (4); Chairman of Orientation Committee (4); Chairman of Self Study Committee (4); Alpha Kappa Gamma (4); *Who's Who Among Students in American Universities and Colleges* (4).

SUE FIELDS ROSS  
ALPHA DELTA PI

Dean's List (1, 2, 3, 4); Spanish Club (1); Stunt Night Chairman (1); Valkyrie (2), Treasurer (2); WF (2); QCA Treasurer (2), Freshman Coordinator (3), President (4); Chairman Independent Reading Program (3); Alpha Kappa Gamma (3); Sigma Mu (3); Alpha Delta Pi Chaplain (3); Dana Scholar (4); *Who's Who Among Students in American Universities and Colleges* (4).

GAIL GENEVIEVE RUTHERFORD  
ALPHA GAMMA DELTA

Social Committee (1, 2, 3); May Court (1, 2, 3, 4), Queen (4), Co-Chairman (3); Stunt Night Chairman (2); Vice-President of Class (3); Alpha Kappa Gamma (3), President (4); President of Class (4); Student Legislature (4); Alpha Gamma Delta Second Vice-President (4); *Who's Who Among Students in American Universities and Colleges* (4).

MARGUERITE RAY SEAY  
CHI OMEGA

Choir (1, 2, 3); FAC (2); Stunt Night Chairman (3); Chi Omega Secretary (3); President Long Dormitory (4); RSC (4); Alpha Kappa Gamma (4); *Who's Who Among Students in American Universities and Colleges* (4).

SUSAN JACQUELINE SHAW  
ALPHA GAMMA DELTA  
Class Representative to DSC (2).

HARRIET ERWIN SLOOP  
CHI OMEGA

Secretary of Class (1); May Court (1, 2, 3, 4), Co-Chairman (3), Maid of Honor (4); QCA Cabinet (2); Quill Staff (2); Valkyrie (2); Social Committee (3); Alpha Kappa Gamma (3); Sigma Upsilon (3); Dean's List (3, 4); Editor of *logos* (4); Student Legislature (4); Self-Study Committee (4); *Who's Who Among Students in American Universities and Colleges* (4).

CAROL ANN SPEAKE  
ALPHA DELTA PI

Alpha Delta Pi Rush Chairman (3); Recording Secretary (4); Social Committee (3); FAC (3); Sigma Mu (3); Dean's List (3, 4); Student Representative on Lecture-Concert Series (4); Sigma Upsilon (4); *logos* Staff (4).

LAURA KATHRYN SPRINKLE  
PHI MU

Spanish Club (1); House Council (2, 3); FAC (2, 3); CORONET Staff (2); Campus Funds Committee (4).

ELEANOR RUTH STARNES  
ALPHA CHI OMEGA

Converse College (1, 2); Choir (3); Alpha Chi Omega First Vice-President (3, 4).

HENRIETTA MACKINNON TAYLOR  
PHI MU

Spanish Club (1); Phi Mu Pledge Director (3); FAC (4); House Council (4); President Morrison Dormitory (4); RSC (4); Elections Committee (4).

LINDA ADAIR THOMPSON  
ALPHA DELTA PI

Biology Club (1, 2, 3, 4), Vice-President (3), President (4); FAC (2, 3); QCA Freshman Coordinating Committee (2); *Student Handbook* Committee (3); Alpha Delta Pi Corresponding Secretary (4); Dean's List (4).

ELIZABETH MOTTE THOMSON  
CHI OMEGA

Dean's List (1, 2, 3, 4); FAC (2); Marsbal (3, 4); Editor of *Student Directory* (3); Chi Omega Treasurer (3, 4); Chairman Point System Committee (4); Chairman Chapel Committee (4); *logos* Staff (4); Sigma Mu (4).

PATRICIA ANNE THOR  
Valparaiso University.

Baptist Missionary Training School.

GENIE VANCE  
KAPPA DELTA

Kappa Delta Assistant Treasurer (2); Rat Week Co-Chairman (2); CORONET Sophomore Editor (2), Editor (3); Student Legislature (3).

RUTH ANN VANDIVER  
ALPHA DELTA PI

President of Class (1, 2); Student Legislature (1, 2, 3, 4); Valkyrie (2); SGA Vice-President (3), President (4); Alpha Kappa Gamma (3); Choir (3, 4); Judicial Board, Ex-Officio (4); *Who's Who Among Students in American Universities and Colleges*.

MARY JACQUELINE VAUGHAN  
PHI MU

Spanish Club (1); CORONET Staff (2); Circulation Manager of the *Flier* (2, 3); House Council (4); FAC (4).

MARGARET DOYLE WALTON

SALLY McCLAMMA WEEKS  
PHI MU  
Florida State University (2).

ELLIE JANE WEST  
CHI OMEGA

Winthrop College (1); Home Economics Club (2, 3, 4), Treasurer (4); FAC (3); Secretary-Treasurer of Class (3); Chi Omega Pledge Scholarship Award (3); House Council (4).

FRANCES USSERY WEST

MARY ELIZABETH WHITE  
ALPHA CHI OMEGA

Alpha Chi Omega Charter Member (1), Secretary (1), President (4); Choir (1, 2, 3, 4); Panhellenic Council (4); Dean's List (4).

MARY LEE WHITE  
KAPPA DELTA

Choir (1, 2, 3, 4); WF (1, 2, 3), Second Vice-President (3); FAC (2, 3); Kappa Delta Treasurer (3), Chaplain (4); University of Vienna (3).

FRANCES TROUTMAN WHITENER  
Wingate College (1, 2).

RUTH KIRKLAND WILKES

Class Representative to QCA (1), Chairman Christian Faith and Heritage Commission (2), Secretary (3); WF Vice-President (2), President (3); Valkyrie President (2); Judicial Board (3, 4), Chairman (4); Alpha Kappa Gamma Secretary (4); Dana Scholar (4); Dean's List (4); Student Legislature (4); *Who's Who Among Students in American Universities and Colleges*.



ASHEVILLE—BREVARD  
CANTON—CHARLOTTE  
DURHAM—HENDERSONVILLE  
KINGS MOUNTAIN—LENOIR  
WAYNESVILLE—WILSON

Member Federal Deposit Insurance Corporation  
Member Federal Reserve System



One car + one senior to drive it,  
some extra money and a desire  
to spend it = dinner out at

### HARRILL'S BAR-B-Q

"Barbeque at Its Best"

1025 Kings Drive      Phone ED 4-8808  
CHARLOTTE, N. C.

## THOMAS & HOWARD CO.

WHOLESALE GROCERS

+

Distributors of Snow Crop Frozen Foods and Minute Maid  
Citrus Juices, Moon Rose Fruits and Vegetables

# Senior Statistics

## LYNDA SUE WILKINSON

Choir (1, 2, 3, 4); Madrigal Singers (1, 2, 3); Delta Omicron (2, 3, 4); Historian and Chaplain (3); Music Director (4); FAC (4).

## SANDRA LYNN WILLIAMS

ALPHA GAMMA DELTA  
WF (1); Alpha Gamma Delta Chaplain (4).

## JOYCE ELEANOR WINGATE

ALPHA CHI OMEGA  
Choir (1, 2, 3, 4); WF (1); Opera Workshop (3, 4); Delta Omicron (3, 4); Alpha Chi Omega Chaplain (4); FAC (4); Madrigal Singers (3).

## MARCARET NAN WOODHAM

CHI OMEGA  
CORONET Staff (1); Home Economics Club (1, 2, 3, 4), Vice-President (4); logos Staff (3, 4).

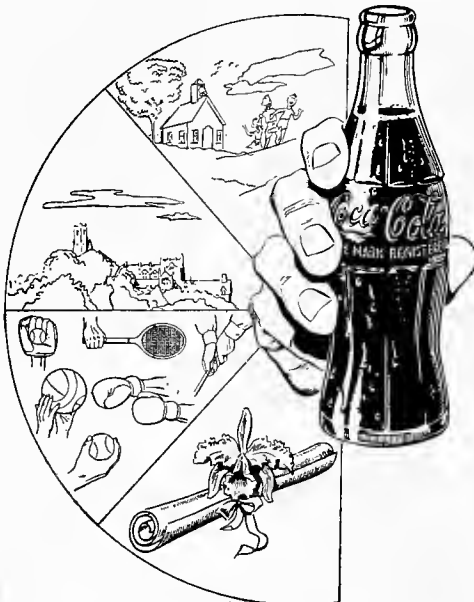
## ROSALYN WOODWARD

CHI OMEGA  
Choir (2); CORONET Staff (2); Elier Staff (3); Panhellenic Council (3); Stunt Night Co-Chairman (3); logos Staff (4); Chi Omega Rush Chairman (4); Draft Committee (4).

## EVELYN LEE YELTON

Wake Forest College (1, 2); House Council (3); Elier Staff (3).

**Refreshment to You  
Through the Years**



Bottled Under Authority of Coca-Cola Company By  
COCA-COLA BOTTLING COMPANY OF CHARLOTTE

Compliments of

**PARK PLACE PHARMACY**

613 Providence Road

CHARLOTTE, N. C.

*The Very Finest*

in hair styling,  
hair shaping,  
permanent waving,  
and hair coloring.

*For an adventure  
in Beauty*

visit

**Roland's**

*Salon of Beauty*



Phone JA 3-0343



**NORTH CAROLINA  
NATIONAL BANK**



This year . . . Meals Fit For Queens

**SAGA FOOD COMPANY**  
KALAMAZOO, MICHIGAN

# Board of Trustees

Akers, John M., Gastonia, N. C.  
Alexander, The Rev. Chester, Burlington, N. C.  
Barnhardt, William H., Charlotte, N. C.  
Belk, Mrs. W. H., Charlotte, N. C.  
Brooks, Thornton H., Greensboro, N. C.  
Cannon, Mrs. William C., Concord, N. C.  
Carson, McAlister, Charlotte, N. C.  
Conyers, W. Priestly, Jr., Spartanburg, S. C.  
Dowdy, George W., Charlotte, N. C.  
Everett, H. H., Charlotte, N. C., *Chairman*  
Everett, The Rev. Joseph W., Rock Hill, S. C.  
Fitzgerald, Mrs. J. M. H., Columbia, S. C.  
Fogartie, The Rev. James E., Charlotte, N. C.  
Harris, James J., Charlotte, N. C.  
Jackson, The Rev. James W., Columbia, S. C., *Advisory*

Johnson, Mrs. Curtis B., Charlotte, N. C.  
Jones, The Rev. James A., Richmond, Va., *Advisory*  
Jones, The Rev. Lynn T., Columbia, S. C.  
Kincey, H. F., Charlotte, N. C.  
Knight, Dr. F. L., Sanford, N. C.  
Lilly, The Rev. Edward G., Hartsville, S. C.  
McCall, L. A., Jr., Florence, S. C.  
McCraw, Carl G., Charlotte, N. C.  
McMeekin, S. C., Columbia, S. C.  
Marshall, Hunter, Charlotte, N. C.  
Quattlebaum, Paul, Conway, S. C.  
Stowe, Mrs. S. P., Belmont, N. C.  
Street, C. P., Charlotte, N. C.  
Walker, Dr. Edwin R., *President, Ex-Officio*

## Administrative Assistants and Staff

Alexander, Ingrid M., 907 Sardis Lane, Charlotte, N. C.  
Resident Nurse  
Bost, A. Jackson, Prcessley Road, Charlotte, N. C.  
Superintendent of Grounds  
Bristol, Myra C., 2431 Vail Avenue, Apt. 5-B, Charlotte, N. C.  
Secretary, Evening College  
Clark, S. Ray, 3007 Parkway Avenue, Apt. A, Charlotte, N. C.  
Multilith Operator  
Denman, Dorothy G., 804 Addison Apts., 831 East Morehead St.,  
Charlotte, N. C.  
Assistant Librarian and Cataloger  
Eisele, Robert P., 1945 Edgewater Drive, Charlotte, N. C.  
Food Service Director  
Gill, Gertrude G., 533 Jefferson Drive, Charlotte, N. C.  
Secretary, Music Department  
Glasgow, Dr. Douglas M., 2822 Glendale Road, Charlotte, N. C.  
College Physician  
Goeller, Lorena A., 116 Canterbury Drive, Charlotte, N. C.  
Resident Counselor, Long Hall  
Gourley, Eloise J., 523 Tyson Street, Charlotte, N. C.  
Secretary, Business Office  
Green, Carrie B., 210 Canterbury Drive, Charlotte, N. C.  
Resident Counselor, Belk Hall  
Hadley, Leonora T., 2048 Hastings Drive, Charlotte, N. C.  
Library Assistant  
Hearn, Madeline S., 329 Tranquil Avenue, Charlotte, N. C.  
Dining Hall Supervisor  
Herron, Ruth, 1022 East Boulevard, Charlotte, N. C.  
Superintendent of Dormitories  
Hill, Pearl N., 3113 Tuckasegee Road, Apt. C, Charlotte, N. C.  
PBX Operator  
Hilton, Lois R., 167 N. Canterbury Road, Charlotte, N. C.  
Administrative Assistant, Business Office  
Hoke, Jane, 3401 Highview Road, Charlotte, N. C.  
Admissions Counselor  
Hoke, Jerry, 3401 Highview Road, Charlotte, N. C.  
Admissions Counselor  
Kelly, Irene T., 1818 Club Road, Apt. 4, Charlotte, N. C.  
Manager, Student Store  
Kimzev, Peggy K., 1602 Kenley Road, Charlotte, N. C.  
Secretary to Dean of the College

McNeill, Donald D., 139 S. Canterbury Road, Charlotte, N. C.  
Assistant to the Treasurer  
Moffett, Mary Ann, 2717 Marston Road, Charlotte, N. C.  
Secretary, Admissions Office; Resident Counselor, Morrison  
Hall  
Morton, Adeline W., 2418 Vernon Drive, Charlotte, N. C.  
Secretary to the Dean of Students  
Poplin, Sam W., 1932 Wilmore Drive, Charlotte, N. C.  
Operations Engineer  
Porter, Robert W., 815 E. Kingston Avenue, Charlotte, N. C.  
Supervisor of Maintenance and Repair  
Powell, Peggy B., 1701 Club Road, Charlotte, N. C.  
Secretary, Alumnae Office  
Rayburn, Jean L., 153 Middleton Drive, Charlotte, N. C.  
Admissions Counselor  
Ridgeway, Jeanne H., 5301 Seacroft Road, Charlotte, N. C.  
Secretary, Library  
Rousseau, Ashby H., 1715 Springdale Avenue, Charlotte, N. C.  
Assistant Dean of Students; Resident Counselor;  
Harris Hall  
Rowe, Robert, 1864 Lynnwood Drive, Charlotte, N. C.  
Manager of Dining Hall  
Rudisill, Louise T., 4221 Murrayhill Road, Charlotte, N. C.  
Secretary to the President  
Staton, Gus, 2227 Winthrop Avenue, Charlotte, N. C.  
Assistant Food Service Director  
Squires, Kate, 1405 Scott Court, Charlotte, N. C.  
Night PBX Operator  
Walter, Frances D., 519 Fenton Place, Charlotte, N. C.  
Secretary to the Assistant to the President  
Wayburn, Jane G., 1304 Iris Drive, Apt. 2, Charlotte, N. C.  
Assistant, Public Relations Office  
Wentz, Dorothy A., 118 Sylvania Avenue, Charlotte, N. C.  
Secretary, Business Office  
White, Anne Pleasants, 123 N. Caswell Road, Charlotte, N. C.  
Director of Education, Presbyterian Hospital School of  
Nursing  
Whiteard, Ronald, 1812 Lynnwood Drive, Charlotte, N. C.  
Manager-Trainee, Food Service

## Administration

Walker, Edwin R., 1871 Cassamia Place, Charlotte, N. C.  
President, A.B., B.D., Ph.D., LL.D., Southwestern University;  
Vanderbilt University; University of Chicago.  
Larson, Curtis W. R., Sherbrooke Drive, Route 2, Box 694-P,  
Charlotte, N. C.  
Dean of the College, A.B., B.D., Ph.D., Hamline University;  
Garrett Biblical Institute; Yale University.  
Farquharson, Don, 2413 Ansley Court, Charlotte, N. C.  
Treasurer and Business Manager, B.S., Kansas State Teachers  
College.  
Gebhardt, Ann S., 2500 Sherwood Avenue, Charlotte, N. C.  
Dean of Students, Assistant Professor of Art, B.F.A., M.A.,  
Lake Erie College; Ohio State University.  
Shaw, Robert W., 6456 Montpelier Road, Charlotte, N. C.  
Director of Evening College, B.S., M.A., Purdue University.  
Indiana University.  
Gourley, Everett E., Jr., 1600 Queens Road, Charlotte, N. C.  
Assistant to the President, A.B., M.A., Vanderbilt University;

Presbyterian School of Education, Union Theological  
Seminary.  
Biser, Harry C., 1796 Jameston Drive, Charlotte, N. C.  
Director of Admissions, B.S., M.A., American University.  
Atkins, Catherine M., 1038½ Queens Road, Charlotte, N. C.  
Registrar, A.B., M.Ed., Meredith College; Boston University.  
Adams, Audrey M., 519 Willoughby Street, Apt. 4, Charlotte,  
N. C.  
Librarian; Instructor in History; A.B., M.A., University of  
British Columbia.  
Miscally, Mildred L., 1020 Arosa Avenue, Apt. 2, Charlotte,  
N. C.  
Director of Public Relations; Assistant Professor of Journal-  
ism, A.B., M.A., University of Georgia.  
Sanders, Ann R., 1427 E. Seventh Street, Charlotte, N. C.  
Director of Alumnae Affairs, A.B., M.A.T., Duke Univer-  
sity; Vanderbilt University.



Ann kept busy every minute, but when she found time for a  
treat, she headed for

## *Shoney's*

the home of the

**BIG BOY**

**HAMBURGER**

800 East Morehead

ED 4-6879

CHARLOTTE, N. C.

# Faculty

- Albright, Thelma, 1901½ Queens Rd., Carol Hall, Garage Apt., Queens College, Charlotte, N. C.  
Associate Professor of English, A.B., M.A., Greensboro College; Duke University.
- Alexander, Anne K., 324-B Wakefield Dr., Charlotte, N. C.  
Instructor in Music.
- Babb, Herbert E., 840 Fairhanks Rd., Charlotte, N. C.  
Head of Department of Psychology; Associate Professor of Psychology; A.B., M.S., Emory University; University of Kentucky.
- Beidler, William, 2108 Crescent Ave., Apt. 1, Charlotte, N. C.  
Associate Professor of Philosophy, B.S., M.A., Ph.D., University of California; University of North Carolina; Osmania University, Hyderabad, India.
- Black, Elizabeth McD., 2717 Sunset Dr., Charlotte, N. C.  
Associate Professor of Education, A.B., M.A., Woman's College of the University of North Carolina; Columbia University; Northwestern University; Temple University.
- Brewer, Charles E., Jr., 1416 Scotland Ave., Charlotte, N. C.  
Visiting Assistant Professor of Economics; A.B., Princeton University.
- Brown, Harry L., Jr., 4067 Sheffield Dr., Charlotte, N. C.  
Head of Department of Education; Professor of Education, A.B., M.A., Ed.D., University of North Carolina; Teachers College, Columbia University.
- Calhoun, Catharine Blue, 219-A Wakefield Dr., Charlotte, N. C.  
Instructor in English, A.B., M.A., Queens College; Northwestern University.
- Chalmers, Roberta T. S., 2325 Wellesley Ave., Charlotte, N. C.  
Associate Professor of English, A.B., M.A., B.Litt., Litt.D., Mount Holyoke College; Radcliffe College; Oxford University; Kenyon College.
- Coker, Jane Frazier, 2215 Hassell Place, Charlotte, N. C.  
Instructor in Music, B.Mus., Salem College.
- Cooper, Kathryn, 1337 Biltmore Dr., Charlotte, N. C.  
Instructor in Music, B.Mus., M.Mus., Oberlin Conservatory of Music; Indiana University.
- Camming, Elizabeth C., 313 Woodland St., Davidson, N. C.  
Visiting Associate Professor of English, A.B., M.A., Smith College; Oxford University.
- Currie, Stuart D., 3900 Conway Ave., Charlotte, N. C.  
Head of Department of Bible, Religion, and Philosophy; Professor of Bible and Religion, A.B., B.D., University of Texas; Austin Presbyterian Seminary; Union Theological Seminary, New York City; Emory University.
- Dunlap, Sarah I., 1829 Queens Rd., Charlotte, N. C.  
Acting Head of Department of Home Economics; Assistant Professor of Home Economics, B.S., M.A., Winthrop College; University of Tennessee.
- Eagle, Naocy, 1863 Lynnwood Dr., Charlotte, N. C.  
Assistant Professor of Music, B.S., M.A., Woman's College of the University of North Carolina; Appalachian State Teacher's College; University of Indiana; Peabody College; Catawba College.
- Fehon, Jack H., 4335 Autumn Ct., Charlotte, N. C.  
Head of Department of Biology; Professor of Biology, B.S., M.S., Ph.D., University of Florida; Florida State University.
- Gaston, M. Margaret, 2427 Vail Ave., Apt. B-17, Charlotte, N. C.  
Instructor in Music, B.Mus., Converse College.
- Glaubitz, Kurt R., 3542 Sloan St., Charlotte, N. C.  
Assistant Professor of Music, B.Mus., M.A., Yale University; Teachers College, Columbia University.
- Hadley, Charles O., 2048 Hastings Dr., Charlotte, N. C.  
Assistant Professor of Speech and Comparative Literature, A.B., M.A., Davidson College; University of North Carolina; University of Besancon; Duke University.
- Hall, Grace M., 216 Wales Ave., Charlotte, N. C.  
Visiting Lecturer in Geography, A.B., M.A., Glenville State Teachers College; Marshall College.
- Hayes, M. Joyce, 219-A Wakefield Dr., Charlotte, N. C.  
Associate Professor of Psychology, A.B., M.A., Ph.D., University of South Carolina; Ohio State University; University of North Carolina.
- Holliday, John A., 2325 Crescent Ave., Charlotte, N. C.  
Professor of Music, A.B., M.A., Hamline University; University of Minnesota.
- Hoyle, Hughes B., Jr., 2040 Hastings Dr., Charlotte, N. C.  
Head of Department of Mathematics and Physics; Professor of Mathematics and Physics, A.B., M.A., University of North Carolina; New York University.
- Irons, F. Virginia, 2820 Chelsea Dr., Charlotte, N. C.  
Assistant Professor of Home Economics, B.S., M.S., Woman's College of the University of North Carolina; Virginia Polytechnic Institute.
- Jenkins, Eleanor L., 1521 E. Seventh St., Charlotte, N. C.  
Associate Professor of Mathematics, A.B., M.A., Queens College; University of North Carolina.
- Johnson, Marie E., 223 N. Dotger Ave., Apt. E-5, Charlotte, N. C.  
Assistant Professor of Music, B.Mus., M.Mus., Greensboro College; Cincinnati Conservatory of Music.
- Lewis, Donald E., 1632 Carolina Circle, Gastonia, N. C.  
Professor of Chemistry, B.S., M.S., Ph.D., Abilene Christian College; Florida State University.
- McDonald, Peggy P., 1825 Jameston Drive, Charlotte, N. C.  
Instructor of Physical Education, B.S., Winthrop College.
- McEwen, Mildred M., 2316 Westfield Rd., Charlotte, N. C.  
Head of Department of Chemistry; Professor of Chemistry, A.B., M.A., Ph.D., Queens College; University of North Carolina.
- Magher, Ruth R., 3419 Park Rd., Charlotte, N. C.  
Head of Department of Physical Education; Instructor in Physical Education, B.S., Woman's College of the University of North Carolina; University of North Carolina; Johns Hopkins University.
- May, Albert R., 211 Ormaad Ct., Charlotte, N. C.  
Associate Professor of Music, Boston University College of Music; Juilliard School of Music.
- Monroe, Donald McD., Jr., 6222 Rose Valley Dr., Charlotte, N. C.  
Head of Department of English; Professor of English, A.B., M.A., Ph.D., Washington and Lee University; Northwestern University.
- Moose, Philip A., 2201 Randolph Rd. (Garage Apt.), Charlotte, N. C.  
Associate Professor of Art, Stevens School; National Academy; Columbia University Art School, Skowhegan School of Painting; Taxco School of Art, Mexico; Academy of Fine Arts, Munich.
- Morrison, John D., 1817 Maryland Ave., Charlotte, N. C.  
Associate Professor of Music, B.Mus., M.Mus., A.A.G.O., Northwestern University.
- Noe, Sarah M., 112 W. Sharpe St., Statesville, N. C.  
Professor of Biology, B.S., M.A., Meredith College; Columbia University; Furman University; University of Virginia; Woman's College of the University of North Carolina; University of Washington.
- Pohlman, Edward W., 260 Ridgewood Ave., Charlotte, N. C.  
Professor of Sociology, A.B., M.A., Ph.D., Emmanuel Missionary College; Ohio State University.
- Preyer, Norris W., 2028 Roswell Ave., Charlotte, N. C.  
Professor of History, A.B., M.A., Ph.D., University of North Carolina; University of Virginia; Harvard University.
- Richardson, Caroline G., 221 Hawthorne Lane, Charlotte, N. C.  
Assistant Professor of Modern Languages, A.B., M.A., Winthrop College; University of the South, Sewanee, Tennessee; University of South Carolina; University of Minnesota; University of Laval, Quebec.
- Salley, C. Louise, 226 Circle Ave., Charlotte, N. C.  
Head of Department of History and Political Science; Professor of History, A.B., M.A., Ph.D., University of Tennessee; Duke University; University of Michigan.
- Shealy, George A., 2339 Selwyn Ave., Charlotte, N. C.  
Professor of Art, Indiana University; Chicago Art Institute; Bell School of Art; Oxbow School of Painting.
- Snyder, Robert A., 1340 Biltmore Dr., Charlotte, N. C.  
Associate Professor of Music, B.S., M.S., D.Mus., University of Illinois; Indiana University.
- Stegner, George A., 5456 Topping Place, Charlotte, N. C.  
Head of Department of Music; Professor of Music, B.S., B.Mus., M.Mus., D.F.A., Miami University, Oxford, Ohio; Cincinnati Conservatory; Chicago Musical College.
- Tarlton, Summers, 232 Wales Ave., Charlotte, N. C.  
Associate Professor of Religion, A.B., M.A., University of Kentucky; Assembly Training School; Transylvania University; Union Seminary, New York; Garrett Biblical Institute.
- Taylor, Mary Lee, 2251 Selwyn Ave., Charlotte, N. C.  
Associate Professor of Bible and Religion, A.B., M.R.E., Salem College; The Biblical Seminary, New York; George Peabody College for Teachers; New York University.
- Tomlinson, Josie C., 2914 Westfield Rd., Charlotte, N. C.  
Assistant Professor of Modern Languages, A.B., M.A.T., Woman's College of the University of North Carolina; Duke University; Mexico College; Middlebury College.
- Weiant, Edmund T., 2500 Inverness Rd., Charlotte, N. C.  
Professor of German and Russian, A.B., Ph.D., Kenyon College; Cornell University; Universitat Basel.
- West, Sarah M., 171 N. Canterbury Rd., Charlotte, N. C.  
Head of Department of Secretarial Practice; Assistant Professor of Secretarial Practice, B.S., M.R.E., Winthrop College; Women's Missionary Training School; Louisville, Kentucky.
- Whyte, Ruth Louise, 2237 Winding Wood Lane, Charlotte, N. C.  
Assistant Professor of Art, Ph.B. B.F.A., M.F.A., University of Chicago; School of Art Institute of Chicago.
- Williams, C. Glyn, 2219 Radcliffe Ave., Charlotte, N. C.  
Visiting Assistant Professor of Economics, A.B., M.A., University College of Wales; University of Manchester.



Hearth and Embers Dining Room  
Famous for Fine Food  
In the

**MANGER MOTOR INN**

N. Tryon & 10th Street

Flowers For All Occasions  
Corsages—Cut Flowers—Funeral Designs  
Tuxedos For Rent  
Sizes—3 Years To Men's 58L

*American Beauty Florist, Inc.*

1506 South Boulevard EDison 3-4177

Betsy selects her silver pattern from

**V. BAIN & CO. JEWELERS**

Over 30 years experience in  
fine jewelry

**Diamonds—Watches—Gifts**  
**Sterling Silver—China—Crystal**

**Watch & Jewelry Repairing**

Complete Registered  
Bridal Service

234 Charlottetown Mall

FR 7-5332



**Marion Davis**

Quality & Style

Ladies' Wear

1033 Providence Road

FROM THE HOUSE OF  
**LANCE**

# Students 1960-61

- Abel, Nancy Fleming (R) (So.) 1015 Pickens St., Columbia, S. C.  
 Abernethy, Susan Womble, (R) (Jr.) 618 Roslyn Rd., Winston-Salem, N. C.  
 Adams, Janice Sherrill (R) (Fr.) Box 671, Seneca, S. C.  
 Adams, Nancy Matilda (R) (Fr.) 713 Arlington Ave., Bristol, Va.  
 Addington, Virginia (R) (So.) 325 Oakhurst Ave., Bluefield, W. Va.  
 Albritton, Jean Nesbitt (R) (Fr.) 1826 S. Hull, Montgomery, Ala.  
 Aldrich, Ann Dunn (R) (Fr.) 901 Oakdale Rd. NE, Atlanta, Ga.  
 Alford, Genevieve (R) (Fr.) 1104 Terrace St., Tallahassee, Fla.  
 Alexander, Nancy Carolyn (NR) (Jr.) 1234 Rembrandt Circle, Charlotte, N. C.  
 Allen, Miriam Mundy (R) (So.) 416 Forest Ave., Spartanburg, S. C.  
 Allen, Priscilla Ann (R) (Fr.) 208 Johnson St., Blackshear, Ga.  
 Allison, Janet Herring (R) (So.) 111 E. Center St., Rose Hill, N. C.  
 Anderson, Adelaide Mott (R) (Sr.) 110 Powe St., Morganton, N. C.  
 Anderson, Emilie Ann (R) (Sr.) 3323 W. Franklin St., Richmond, Va.  
 Anderson, Rela Elizabeth (R) (Fr.) 1820 Whaley Ave., Pensacola, Fla.  
 Anderson, Virginia Kent (R) (Fr.) Rt. 4, Box 343, Marietta, Ga.  
 Apperson, Nancy Joyce (R) (Sr.) 2218 Maplewood Ave., Winston-Salem, N. C.  
 Arscott, Patricia Gaynor (R) (Jr.) 214 Main St., Troy, N. C.  
 Ashworth, Diana Jane (NR) (Fr.) 1121 Rembrandt Circle, Charlotte, N. C.  
 Atkins, Beverly Ann (R) (Sr.) 33 Clarendon Rd., Asheville, N. C.
- Baker, Grace Jordon (R) (Fr.) 5003 Worthington Dr., Washington 16, D. C.  
 Barker, Catherine Irene (R) (Sr.) 836 Leonie Circle, Jacksonville, Fla.  
 Barrow, Harriet Boyd (R) (Jr.) 141 Mills Ave., Spartanburg, S. C.  
 Bates, Linda Ann (R) (Fr.) 727 Pleasant St., Worcester, Mass.  
 Bayley, Lucinda Hope (R) (Fr.) Montrose Ave., Baltimore 12, Md.  
 Beam, Doris Evelyn (NR) (Jr.) 822 Hartford Ave., Charlotte, N. C.  
 Beckett, Jane Ellen (R) (Fr.) 415 Whitaker Blvd. W., Huntington, W. Va.  
 Beebe, Rae Ellen (R) (Jr.) 1007 Eulalia Rd. NE, Atlanta, Ga.  
 Bell, Martha Anne (R) (Fr.) Park Ave., York, Ala.  
 Bell, Patricia Payton (NR) (Sr.) 1501 1/2 Thomas Ave., Charlotte, N. C.  
 Bero, Mary Carolyn (R) (Fr.) 1763 Council Bluff Dr. NE, Atlanta, Ga.  
 Black, Judith Locke (R) (Jr.) 106 W. Depot St., Concord, N. C.  
 Blackwelder, Brenda Carole (NR) (So.) 103 Stonewall Jackson Homes, Charlotte, N. C.  
 Blackwelder, Jane Louise (R) (Fr.) Box 246, Mocksville, N. C.  
 Blair, Cleone Irene (NR) (Sr.) 1426 Biltmore, Charlotte, N. C.  
 Blevins, Margaret McIver (R) (Jr.) 805 Taylor St., Bristol, Tenn.  
 Bloodworth, Ann Frances (R) (Jr.) 111 W. Avalon, Longview, Tex.  
 Bohannon, Frances Marion (NR) (Fr.) 2001 Eastway Drive, Charlotte, N. C.  
 Bolick, Dorcas Gilbert (R) (Fr.) P. O. Box 307, Conover, N. C.  
 Booth, Trula Sutton (NR) (Jr.) 1432 Springwood Lane, Charlotte, N. C.  
 Bopp, Virginia Lee (R) (Sr.) 1400 Lenape Drive, Miami Springs, Fla.  
 Bowers, Margaret Nichols (R) (Fr.) 117 Powe St., Morganton, N. C.  
 Bradford, Mary Stewart Covington (NR) (Jr.) Box 305, Huntersville, N. C.  
 Bradley, Georgia Carolyn (R) (Fr.) 753 Arbutus Dr., Columbia, S. C.  
 Brady, Nancie Mann Brook (NR) (Jr.) 2460 Wade Ave., Raleigh, N. C.  
 Bright, Anne Carrington (R) (Fr.) Cinnamon Hill, Cobbam, Va.  
 Brinkley, Marcia Lucretia (R) (Jr.) Box 267, Largo, Fla.  
 Brooks, Bernice Joanna (NR) (Jr.) 1505 Matheson Ave., Charlotte, N. C.  
 Brooks, Rachel Susan (R) (Sr.) 401 Aberdeen Tr., Greensboro, N. C.  
 Broome, Ruby Marlene (NR) (Jr.) Rt. 3, Waxhaw, N. C.  
 Brown, Katherine LaVerne (R) (Fr.) 1167 Oakcliff Rd., Macon, Ga.  
 Bullock, Vivian Anne (R) (Fr.) Box 323, Georgetown, S. C.  
 Burgin, Caroline Neely (R) (Fr.) 214 Carter St., Lincolnton, N. C.  
 Burnie, Valerie Anitra (R) (So.) 108 Elcrest, Jackson, Miss.
- Cahoon, Anita McIlhenny (R) (So.) 235 E. Main St., Washington, N. C.  
 Calhoun, Joan Louise (R) (Fr.) 2 Grandview Dr., Charleston, W. Va.  
 Camicia, Caren Reve (R) (Fr.) Box 638, Holden, W. Va.  
 Camlin, Sheila Sue (R) (So.) 16 Magnolia Dr., Georgetown, S. C.  
 Campbell, Mary Pauline (R) (So.) Box 95, Rowland, N. C.  
 Cannon, Harriet Coltrane (NR) 65 N. Union St., Concord, N. C.  
 Cannon, Sandra Jean (R) (Jr.) 37 Fairfax Dr., Huntington, W. Va.  
 Carmichael, Elizabeth Florence (R) (Sr.) 123 Westview Dr., Winston-Salem, N. C.  
 Carpenter, Brenda Lee (NR) (So.) Box 723, Davidson, N. C.  
 Carter, Frances Linder (R) (Jr.) 11 Pinehurst Dr., Greenville, S. C.  
 Cashwell, Linda George (R) (Jr.) 2601 W. Market St., Greensboro, N. C.  
 Cason, Sally Jackson (R) (So.) 515 N. Maple St., Murfreesboro, Tenn.  
 Cathey, Carol (NR) (Sr.) 2000 Woodhaven Rd., Charlotte, N. C.  
 Cellar, Lillian Georgette (R) (Fr.) 2903 Ionic Ave., Jacksonville, Fla.  
 Challen, Sue Gary (R) (Fr.) 3586 Midland, Memphis, Tenn.
- Chapman, Jeanne Marie (R) (So.) 1420 Peacock Ave., Columbus, Ga.  
 Chappell, Dawn Stewart (R) (So.) 3379 Kernersville Rd., Winston-Salem, N. C.  
 Cherry, Charlotte Frierson (R) (Fr.) 5324 Albemarle St., Washington 16, D. C.  
 Chostner, Nancy Cole (R) (Fr.) 324 E. Greenway N., Greensboro, N. C.  
 Christian, Marianna Ramsey (R) (Sr.) 703 Penniman Rd., Williamsburg, Va.  
 Churchill, Diana Randall (R) (Fr.) 3295 Mathieson Dr. NE, Atlanta, Ga.  
 Clemmons, Mariba (R) (Sr.) 1510 Wildwood Ave., Columbus, Ga.  
 Clontz, Juanita McLeod (NR) (Sr.) 2843 Dorchester Pl., Charlotte, N. C.  
 Clotfelter, Nancy (R) (Fr.) Powder Springs Rd., Marietta, Ga.  
 Clower, Rosemary (R) (So.) Box 56, Hampden Sydney, Va.  
 Clyburn, Martha Marie (R) (Jr.) Route 4, Bishopville, S. C.  
 Cochran, Carol Helen (R) (Jr.) 1255 Jean Court, Jacksonville, Fla.  
 Cohen, Ruth Goldman (NR) (Jr.) 1518 Audubon Rd., Charlotte, N. C.  
 Coiner, Mary Louise (R) (Jr.) Ingleside, Staunton, Va.  
 Coley, Susanna Linthicum (R) (Jr.) 3136 Sussex Rd., Raleigh, N. C.  
 Collins, Mary Lou (R) (Fr.) Rt. 8, Chattanooga Valley Dr., Chattanooga, Tenn.  
 Cook, Nancy Gray (NR) (Jr.) 5042 Allison Dr., Charlotte, N. C.  
 Cooke, Dorothy Anne (R) (Fr.) Box 197, Gastonia, N. C.  
 Cooper, Joanne (NR) (So.) 1315 Biltmore Drive, Charlotte, N. C.  
 Cox, Betty Raye (R) (Sr.) Rt. 1, Box 64, Williamsburg, Va.  
 Cox, Elizabeth Roberta (R) (Fr.) 537 E. Georgia St., Woodruff, S. C.  
 Craig, Mary Allen (NR) (Jr.) 1112 Granville Rd., Charlotte, N. C.  
 Craig, Sara Frances (R) (Sr.) 8356 Maravista St., Jacksonville, Fla.  
 Cranford, Helen Louise (R) (Sr.) 130 Circle Court, Elkin, N. C.  
 Crevensten, Helen Biddle (NR) (So.) 306 Hillside Ave., Charlotte, N. C.  
 Crickmer, Janet Hope (R) (So.) 2339 Verdun Heights, Bluefield, W. Va.  
 Crotts, Judith Ray (NR) (Jr.) 1516 The Plaza, Charlotte, N. C.  
 Currie, Catherine McArthur (NR) (So.) 2000 Wendover Rd., Charlotte, N. C.
- Dailey, Myra Lou (R) (Sr.) 1767 Greenbrier Rd., Kalamazoo, Mich.  
 Daniel, Betty Jane (R) (So.) 201 W. Fifth Ave., Gastonia, N. C.  
 Davis, Kay Shuler (R) (So.) Rt. 3, Box 25, Quincy, Fla.  
 Dawson, Sara Elizabeth (R) (Fr.) 1452 Green Berry Rd., Jefferson City, Mo.  
 Deahl, Ann Lamar (R) (Fr.) 646 Melrose, Kenilworth, Ill.  
 Dean, Beverly Ann (R) (Fr.) 2230 Wheeler Rd., Raleigh, N. C.  
 Deaton, Mary Amelia (R) (Fr.) 130 Briarwood Rd., Statesville, N. C.  
 Deedman, Rainsford Dubose (R) (Fr.) 507 Timber Lane, Devon, Pa.  
 Deets, Carol Anne (NR) (Sr.) 701 Morningside Drive, Miami Springs, Fla.  
 Dekle, Lettie Lee (R) (Fr.) Box 415, Perry, Fla.  
 DeWitt, Nancy Lee (R) (So.) Box 7, Ellerbe, N. C.  
 Dickinson, Petra Jane (R) (So.) S. San Pablo Rd., Jacksonville Beach, Fla.  
 Dobbins, Carolyn Clara (R) (Jr.) 1084 S. Main St., Rutherfordton, N. C.  
 Douglas, Susan (NR) (Jr.) 2038 Queens Rd., Charlotte, N. C.  
 Dudley, Jane Carolyn (R) (Sr.) 20 Lorraine Ave., Asheville, N. C.  
 Duerson, Martha Carrel (R) (Fr.) 7840 S.W. 54th Ave., Miami 43, Fla.  
 Duetsch, Darrelyn Edith (R) (Fr.) 3 Hillcrest Rd., Tenafly, N. J.  
 Dunwoody, Cornelia Elizabeth (R) (Jr.) 401 Greenville Hwy., Easley, S. C.  
 Dyer, Georgena Sue (R) (Fr.) 361 Sixth St. NW, Atlanta, Ga.
- Eason, Ann (R) (Fr.) Country Club Addn., Clarksburg, W. Va.  
 Eckert, Beverly Evelyn (R) (Fr.) Box 164, Winter Haven, Fla.  
 Edwards, Ina Rose (R) (Jr.) Route 1, Society Hill, S. C.  
 Ellington, Virginia Smith (NR) (Sr.) Rt. 1, Belmont, N. C.  
 Eskridge, Josephine All (NR) (Sr.) 588 Demere Rd., St. Simon's Is., Ga.  
 Eubanks, Rosanne (R) (So.) 2338 Greenglade Rd., NE, Atlanta, Ga.  
 Evans, Sula Anne (R) (So.) 3118 Home Park Circle, Jacksonville, Fla.  
 Ewing, Deanna Rawlings (R) (So.) 308 Magnolia Drive, Clearwater, Fla.
- Faires, Evelyn (NR) (Jr.) 1826 Lombardy Circle, Charlotte, N. C.  
 Falk, Martha Elizabeth (R) (Fr.) 1225 Greenridge Rd., Jacksonville, Fla.  
 Farrar, Linda Elizabeth (R) (So.) Box 263, Mt. Holly, N. C.  
 Feitler, Linda Rose (R) (Fr.) 86 Elizabeth Ave., Teaneck, N. J.  
 Ferran, Janet Margaret (R) (So.) E. Crooked Lake Dr., Eustis, Fla.  
 Files, Patricia Ann (R) (Fr.) Rt. 5, Woodhaven Rd., Paris Mt., Greenville, S. C.  
 Finklea, Susann (R) (Sr.) 604 S. Graham St., Florence, S. C.  
 Fischer, Corah Ann (R) (Jr.) 1018 Beechwood Lane, Falls Church, Va.  
 Fisher, Judith Jo (R) (Sr.) 207 Bertie Dr., Raleigh, N. C.  
 Fisher, Martha Little (NR) (So.) 2110 E. 5th St., Charlotte, N. C.  
 Fisher, Mary Elizabeth (NR) (Jr.) C.M.R. 759, Charlotte, N. C.  
 Foster, Susan (R) (So.) 101 Pine Drive, Crestview, Fla.  
 Fowler, Susan Janice (R) (Sr.) 712 W. Divine St., Dunn, N. C.



Miss Genie Stallworth

Portraits for class sections, May Day, and the majority of the informal shots for the 1961 CORONET were made by—

*Phil* **AULL** *Studio*

oil portraits •

bridals •

1311 Pecan Avenue

ED 4-6271

CHARLOTTE, N. C.

# Students 1960-61

- Freeman, Alice Jeanne (R) (So.) 135 Forrest St., Fort Mill, S. C.  
 Freeman, Renate Elizabeth (R) (Fr.) Wbarton, W. Va.  
 Fries, Helen Plasterer (NR) (Sr.) 1210 Barkley Rd., Charlotte, N. C.  
 Fry, Cora Helen (R) (Sr.) 425 W. Leicester St., Winchester, Va.  
 Fuller, Judy Marian (R) (So) 719 Henry St., Roanoke Rapids, N. C.
- Gabb, Susan Palmer (R) (So.) 43 Old Mill Rd., Richmond, Va.  
 Gamm, Brenda Viril (R) (Fr.) 430 E. Hayne St., Woodruff, S. C.  
 Gammon, Jane (R) (Fr.) 1931 Abingdon Hwy., Bristol, Va.  
 Gardner, Judy Allen (R) (Fr.) 1100 N. Lake Howard Dr., Winter Haven, Fla.  
 Garland, Louisa Anae (R) (Fr.) 143 Superior Ave., Decatur, Ga.  
 Garmon, Wanda Faye (NR) (Jr.) 6014 Netherwood Dr., Charlotte, N. C.  
 Garrison, Rebecca Shapard (R) (So.) "Pinewood", Rt. 3, Moultrie, Ga.  
 Garst, Eleanor Burruss (R) (So.) 809 Twyckenham Dr., Greensboro, N. C.  
 Gaulding, Charlotte Ann (R) (Fr.) Charlotte Court House, Va.  
 Gay, Marcia Irvine (NR) (So.) 143 Huntley Place, Charlotte, N. C.  
 Gelzer, Kathleen Baker (R) (Fr.) 1747 N. Somerset Circle, Charleston, S. C.  
 Gilliam, Martha Stephens (NR) (Sr.) 1323 Richmond Place, Charlotte, N. C.  
 Girvin, Judy Bingham (NR) (Jr.) 508-B Wakefield Dr., Charlotte, N. C.  
 Gittings, Roberta Louise (R) (Fr.) 2772 Riverside Ave., Jacksonville, Fla.  
 Givhan, Gene Lewis, (R) (So.) 406 Highland Ave., Montevallo, Ala.  
 Goodman, Melinda Connell (R) (Jr.) 901 Fairmont Ave., Salisbury, N. C.  
 Goodwin, Barbara Aimar (R) (So.) 1909 Boundary St., Beaufort, S. C.  
 Gorman, Carol Lyon (R) (Fr.) 1570 Park Terrace W., Atlantic Beach, Fla.  
 Grab, Geraldine Caroline (R) (Fr.) 416 Filmore St., Riverside, N. J.  
 Grafton, Zena Kay (R) (Fr.) 1126 Nicholson Rd., Jacksonville, Fla.  
 Gray, Judith Connie (R) (Fr.) 72 San Juan Dr., Ponte Vedra, Fla.  
 Gray, Kathryn Mickle (NR) (Fr.) 1756 Merriman Ave., Charlotte, N. C.  
 Gray, Nancy Ann (R) (Sr.) 319 N. Park Dr., Spartanburg, S. C.  
 Greear, Elizabeth Jean (R) (Fr.) Box 390, Marion, Va.  
 Green, Julia Elizabeth (R) (So.) 1211 Country Club Dr., Orlando, Fla.  
 Grieve, Carol Porter (R) (Fr.) 24 Columbia Blvd., Waterbury, Conn.  
 Grimsley, Judith Bernice (NR) (Fr.) 1426 Woodland Dr., Charlotte, N. C.  
 Grimsley, Mary Bruce (R) (Sr.) 701 Walnut St., Fairmont, N. C.  
 Guigou, Marilee (R) (Jr.) 905 N. Italy St., Valdese, N. C.  
 Gurley, Margaret Johnston (NR) (Sr.) Rt. 9, Box 222-D, Charlotte, N. C.  
 Guyer, Patsy Jo (NR) (Sr.) 2236 Queens Rd. E., Charlotte, N. C.
- Hagler, Marguerite Lloyd, (R) (Fr.) 1228 Indian Mound Rd., Lexington, Ky.  
 Hahn, Margaret Madeline (R) (Jr.) 81 Eastover Ave., Concord, N. C.  
 Hale, Mary Lee (R) (So.) Greenwood Farms, Greenwood, Va.  
 Hall, Lauretta Carole (R) (Sr.) 2607 14th Ave., Chattanooga, Tenn.  
 Hall, Nancy-Coe (NR) (Jr.) Rt. 1, Box 156, Mt. Holly, N. C.  
 Hallman, Elizabeth Diane (R) (Fr.) 12 Mt. Vista Ave., Greenville, S. C.  
 Hardee, Sarah Linda (R) (Sr.) 603 W. Divine St., Dunn, N. C.  
 Harper, Frances Nanette (R) (Fr.) W. Park Ave., Milton, Fla.  
 Harrington, Sara Irene (R) (So.) 2305 E. Lake Rd., Decatur, Ga.  
 Hastings, Linda Fay (R) (Fr.) Rt. 1, Mooresville, N. C.  
 Hastings, Sylvia LaMarr (NR) (Fr.) Rt. 11, Box 248, Charlotte, N. C.  
 Helms, Kathleen (NR) (Jr.) 1527 Nassau Blvd., Charlotte, N. C.  
 Hemphill, Alice Gammon (R) (So.) 846 Camellia St., Columbia, S. C.  
 Hill, JoAnn (R) (Jr.) 648 E. Main St., Spartanburg, S. C.  
 Hill, Pearl Elizabeth (NR) (So.) Rt. 2, Box 863, Charlotte, N. C.  
 Himebauch, Bonnie Talley (NR) (So.) Rt. 1, Box 202, Matthews, N. C.  
 Hitchcock, Nancy Carolyn (R) (Sr.) 245 Linden Dr., Danville, Va.  
 Hobbs, Ann Katherine (R) (Jr.) 4411 Sherwood Rd., Jacksonville, Fla.  
 Holladay, Glenina Kirkland (R) (Fr.) 116 Trail #1, Burlington, N. C.  
 Holliday, Anne Cordelia (NR) (Fr.) 2325 Crescent Ave., Charlotte, N. C.  
 Hollingsworth, Margaret Elaine (R) (Fr.) 406 S. Hubert, Tampa, Fla.  
 Holmead, Anne Hilton (R) (So.) 1403 Noyes Dr., Silver Spring, Md.  
 Hook, Elisabeth Johnson (R) (So.) 620 Kershaw St., Cheraw, S. C.  
 Hopkins, Mary Pearl (R) (Jr.) 824 Myrick St., Waynesboro, Ga.  
 Hopkins, Nancy Eudora (NR) (Sr.) 1229 Harding Place, Charlotte, N. C.  
 Horner, Evelyn June (R) (Sr.) 1209 Country Club Dr., Blytheville, Ark.  
 Hough, Carolyn Davis (R) (Fr.) 614 Kimberly Dr., Greensboro, N. C.  
 Houston, Celia Overton (NR) (Sr.) 620 Queens Rd., Charlotte, N. C.  
 Howerton, Ann Snyder (NR) (So.) 2812 Park Rd., Charlotte, N. C.  
 Huddleston, Jean Karol (NR) (Jr.) Rt. 11, Box 252, Charlotte, N. C.  
 Hudson, Dorothy Louise (R) (Jr.) Rt. 2, Pocomoke City, Md.  
 Hunsberger, Dorothy Ann (R) (Fr.) 2432 Sunset Dr., Tampa, Fla.  
 Hunter, Jean McEwen (NR) (Fr.) Box 70, Mint Hill, N. C.
- Huater, Rachel Mildred (R) (Fr.) 72 Caldwell, Newberry, S. C.  
 Huskey, Yvonne Louise (NR) (Jr.) 1321 Cavendish Court, Charlotte, N. C.  
 Hutcheson, Nancy Barksdale (R) (Fr.) 202 Burnley Dr., Staunton, Va.  
 Hutchins, Elizabeth Erwin (R) (So.) 100 N. Anderson St., Morganton, N. C.  
 Hutchius, Patricia Anne (R) (Fr.) 1708 West Rd., Jacksonville, Fla.
- Ingram, Sloan Lentz (R) (So.) 307 Third St., Cheraw, S. C.  
 Isom, Mary Pedrick (R) (Fr.) 431 Rosewood Dr., Florence, S. C.
- Jackson, Barbara Mae (R) (So.) 1835 Waldemere St., Sarasota, Fla.  
 Jackson, Emma Susanne (R) (Fr.) 104 McIver St., Cheraw, S. C.  
 Jackson, Helen Celeste (R) (So.) 2635 Arbor Ave. SE, Atlanta, Ga.  
 Jaffe, Beatrice S. (NR) 418 Cherokee Rd., Charlotte, N. C.  
 James, Allison (R) (Fr.) Mayesville, S. C.  
 James, Harriet Susan (R) (Fr.) 2904 Farm Rd., Alexandria, Va.  
 Jeffreys, Sally Jean (NR) (Jr.) 2021 Hopedale Ave., Charlotte, N. C.  
 Jenkins, Elizabeth Caroline (R) (Sr.) Rt. 1, Box 121-A, Castle Hayne, N. C.  
 Jenkins, Sara Celeste (R) (Fr.) 1413 Dorothy Ave., Haines City, Fla.  
 Jennette, Sarah Ann (R) (Jr.) 601 Valley Dr., Dalton, Ga.  
 Jerman, Frances Catherine (NR) (Sr.) 531 Merwick Circle, Charlotte, N. C.  
 Johnson, Barbara Frances (R) (So.) 1217 Brook Dr., Wilmington, Del.  
 Jobson, Claudia Evelyn (R) (Fr.) 4154 Churchwell Rd., Jacksonville 10, Fla.  
 Johnson, Nina Elizabeth (R) (So.) 512 S. 4th St., Smithfield, N. C.  
 Johnson, Ida Elizabeth (R) (Jr.) 1512 Evergreen Ave., Wayne, N. C.  
 Johnson, Mary Rebecca (R) (Fr.) Prince Frederick, Md.  
 Jones, Helen Joanne (R) (Jr.) 404 E. First Ave., Easley, S. C.  
 Jones, Judith Ann (R) (So.) 63 High St., Box 349, Canton, N. C.  
 Jones, Kohar (NR) (Sr.) 434 Poindexter Dr., Charlotte, N. C.  
 Jones, Lucille Finch (NR) (Sr.) 1800 Queens Rd. W., Charlotte, N. C.  
 Jordau, Patricia Kerr (NR) (Fr.) 2312 Selwyn Ave., Charlotte, N. C.  
 Jubanyik, Elaine Morton (R) (Fr.) 21 Clifton Ave., Merchantsville, N. J.  
 Judd, Janet Elizabeth (R) (So.) 1627 Pope Ave., Richmond, Va.
- Karagianni, Basilike Peter (NR) (Jr.) 940 Queens Rd., Charlotte, N. C.  
 Katsaris, Mary George (NR) (Jr.) 2336 Commonwealth Ave., Charlotte, N. C.  
 Kilner, Meriam Fowler (R) (So.) 310 Saratoga Dr., Tallahassee, Fla.  
 King, Alice Julene (R) (So.) 45 Candler Rd. NE, Atlanta, Ga.  
 King, Carolyn Snyder (R) (Fr.) 515 41st St., Charleston, W. Va.  
 King, Cynthia Ann (R) (Sr.) Rt. 3, Kingsport, Tenn.  
 Koelmel, Judith Ann (R) (Jr.) 754 Hertford Rd., Winston-Salem, N. C.  
 Kuralt, Sory (NR) 1126 Queens Rd. W., Charlotte, N. C.
- Lamb, Martha Hardy (R) (Fr.) 521 S. Fort Dr., Charleston, W. Va.  
 Lancaster, Rella Jean (R) (So.) 612 Mills St., Raleigh, N. C.  
 Lane, Susanne Bernice (NR) (Jr.) 218 Tranquil Ave., Charlotte, N. C.  
 Lanehart, Sandra Verner (R) (Fr.) 665 E. Stanford St., Bartow, Fla.  
 Lang, Sharon Kay (R) (Fr.) 305 W. Church St., Bartow, Fla.  
 Larson, Carol Jean (NR) (So.) 7020 Linda Lake Dr., Charlotte, N. C.  
 Lawall, Carolyn Harriet (R) (Fr.) 607 Heights Rd., Ridgewood, N. J.  
 Lawther, Jane Wyatt (R) (Fr.) 3010 Wayne Dr., Wilmington, N. C.  
 Lee, Alacia Jaoc (R) (Jr.) 411 W. Court St., Quitman, Ga.  
 Lee, Margaret Ann (R) (Sr.) 608 Lake St., Orlando, Fla.  
 Lewis, Isabelle B. (R) (So.) 1012 N. "B" St., Lake Worth, Fla.  
 Lina, Betsy Carole (R) (Sr.) Landis, N. C.  
 Litaker, Linnea Ruth (R) (Fr.) Burrage Rd., Concord, N. C.  
 Lloyd, Mildred Emily (R) (So.) 306 Furches St., Raleigh, N. C.  
 Long, Kay Hilton (NR) (Jr.) Rt. 7, Monroe, N. C.  
 Lucas, Virginia May (R) (Fr.) 32 Garfield Ave., Old Bridge, N. J.  
 Lyon, Katherine Denise (R) (Sr.) 2001 N. Adams St., Arlington, Va.
- McClure, Marie Elliott (NR) (Jr.) Rt. 9, Box 369, Charlotte, N. C.  
 McClure, Mary Moffett (R) (Jr.) Spottswood Farms, Spottswood, Va.  
 McCormac, Jonnie Flynn (R) (So.) Rt. 1, Dillon, S. C.  
 McCubbin, Joyce Marie (R) (So.) 521 Jackson St., Campbellsville, Ky.  
 McCutchen, Anne Cunningham (R) (Sr.) 520 Sunset Dr., Spartanburg, S. C.  
 McDaniel, Patricia Ann (R) (Sr.) Box 754, Rutherfordton, N. C.  
 McDonald, Virginia Dare (R) (Fr.) Rt. 2, Box 169, Rockingham, N. C.  
 McDowall, Claudia Ann (R) (Fr.) 2330 Fort Bragg Rd., Fayetteville, N. C.  
 McGarity, Sarah Louise (R) (So.) 415 S. Main St., Moultrie, Ga.  
 McGee, Anne Pringle (R) (So.) 11 Sayle Rd., The Crescent, Charleston, S. C.  
 McGrath, Ann Eads (R) (Fr.) 2112 Strathmore Blvd., Louisville, Ky.

Harriet finds it hard to decide on just one of the beautiful patterns at



## Garibaldi & Bruns

Leading Jewelers Since 1896

104 S. Tryon St.

FR 5-3331

# Suber's

## TownHouse

Providence at Queens Road

FR 6-1224

## BIGGERS BROTHERS, INC.

Wholesale

FRUITS, PRODUCE AND EGGS

INSTITUTIONAL SIZED CANNED FOODS

2800 South Boulevard

P. O. Box 2356

CHARLOTTE 1, N. C.

## Myers Park Beauty Salon

759 Providence Road

"Charlotte's House of Charm"

Phone ED 2-5031

## ROBERT ROLLINS BLAZERS, INC.

832 Broadway

NEW YORK 3, N. Y.

Specialized Blazer Service

schools	classes
sororities	bands
colleges	athletic teams
fraternities	glee clubs
golf clubs	awards committees
honor societies	choral groups

# Students 1960-61

- McLaughlin, Anne Niven (R) (Fr.) Rt. 3, Box 143, Waxhaw, N. C.  
 McLaughlin, Sara Swann (R) (Fr.) 504 Walnut Ave., Box 69, Waynesboro, Va.  
 McMichael, Harriette Agnes (R) (So.) 12-808 Gay Ave., Cleveland 5, Ohio  
 McMichael, Merry Jane (R) (Sr.) 12-808 Gay Ave., Cleveland 5, Ohio  
 McMullen, Della Jane (R) (Fr.) 411 N. Glenwood Ave., Clearwater, Fla.  
 McNair, Flora Christian (R) (Jr.) 1608 Home Ave., Hartsville, S. C.  
 MacQueen, Julia Marilyn (R) (Sr.) Rt. 1, Little Rock, S. C.  
 MacRae, Suzanne Haynes (R) (So.) Box 247, Mt. Gilead, N. C.  
 Mack, Kathryn Tracy (R) (Sr.) 1109 E. Broad St., Statesville, N. C.  
 Magnan, Jane Elizabeth (R) (Jr.) Rt. 2, Hogansville, Ga.  
 Marks, Agnes Elizabeth (R) (Sr.) Ellerson, Va.  
 Marks, Alice Wingo (R) (So.) 225 S. 17th St., Wilmington, N. C.  
 Marsh, Elizabeth Lambeth (R) (Fr.) 108 N. Payne St., Fairfax, Va.  
 Mason, Matilyn Lee (R) (Sr.) 4113 Noyes Ave., Charleston, W. Va.  
 Massey, Julia Davidson (R) (So.) 708 S. 5th St., Dade City, Fla.  
 Mayfield, Mary Nancy (NR) (So.) 718 Jackson Ave., Charlotte, N. C.  
 Mays, Frances Marion (R) (Fr.) 1317 Berwick Ave. NE, Atlanta, Ga.  
 Mercer, Claire Walsh (NR) (Sr.) 4100 Castlewood Rd., Charlotte, N. C.  
 Merrell, Gail Deanna (NR) (Jr.) 2323 Morton St., Charlotte, N. C.  
 Methfessel, Alice Helen (R) (Fr.) 624 Carleton Rd., Westfield, N. J.  
 Middlebrooks, Martha Irma (R) (Sr.) 319 Rogers Ave., Macon, Ga.  
 Miller, Frances Ann (R) (Fr.) 3407 San Nicholas, Tampa, Fla.  
 Miller, Margaret Lee (NR) (So.) 2840 Hillsdale Ave., Charlotte, N. C.  
 Millock, Nancy Lee (R) (So.) 379 New Boston Rd., Fall River, Mass.  
 Milton, Frances (R) (Fr.) 2066 Evergreen Lane NW, Atlanta, Ga.  
 Mintich, Mary Ellen (NR) 517 Dogwood Lane, Belmont, N. C.  
 Moffett, Mary Leighton (R) (Fr.) Box 72, Taylorsville, N. C.  
 Moise, Martha Louise (R) (So.) 11 Moise Dr., Sumter, S. C.  
 Morris, Marion Lea (R) (Fr.) 2706 Van Dyke Ave., Raleigh, N. C.  
 Morrison, Willie Martha (R) (So.) 1610 Home Ave., Hartsville, S. C.  
 Morton, Suzann Sutton (R) (Jr.) Slab Fork, W. Va.  
 Mullis, Sara Butler (NR) (Sr.) 7023 Albemarle Rd., Charlotte, N. C.  
 Munn, Elizabeth Enlalia (R) (Sr.) Box 33, Pamlico, S. C.  
 Myers, Bonnie Elizabeth (R) (Fr.) Box 1412, Salisbury, N. C.  
 Myers, Loretta Lee (R) (Sr.) 307 Virginia Ave., Danville, Va.  
 Nanne, Nancy Moore (NR) (Sr.) 325-B Wakefield Dr., Charlotte, N. C.  
 Neely, Jacqueline Reid (NR) (Sr.) 102 Highland St., Belmont, N. C.  
 Neighbors, Frances Diane (R) (Fr.) Robert Meyer Hotel, Jacksonville, Fla.  
 Nichols, Helene (R) (So.) Eastwood Ave., Swannanoa, N. C.  
 Nisbet, Maywood Mallard (R) (So.) 194 Howard St. NE, Atlanta, Ga.  
 Norris, Frances Jean (R) (Fr.) 2005 Lombardy Circle, Charlotte, N. C.  
 Nunn, Carol McLendon (R) (Fr.) 1718 Sunset Lane, Tallahassee, Fla.  
 Odiome, Elizabeth McFaddin (R) (So.) 1357 Ellison Rd., Columbia, S. C.  
 Oehler, Kathryn Anne (R) (Fr.) 201 Ware St., Shelby, N. C.  
 Ogburn, Sally (R) (Fr.) 1806 W. Market St., Greensboro, N. C.  
 O'Kelley, Louise Reid (R) (So.) 851 Circle Dr., Tallahassee, Fla.  
 Ong, Dorothy Lillian (R) (Fr.) 71 E. Main St., Mendham, N. J.  
 Orta, Ramona Elizabeth (R) (Jr.) 2616 Van Dyke Ave., Raleigh, N. C.  
 Oyer, Constance Lou (R) (Fr.) 619 Arch St., Chillicothe, Ohio.  
 Padgett, Frances Armstrong (NR) (Sr.) Rt. 2, Box 903, Charlotte, N. C.  
 Park, Margaret DeWitt (NR) (Sr.) 435 Wakefield Dr., Charlotte, N. C.  
 Parsons, Sarah McAllister (R) (Fr.) 260 S. Eighth St., Wytheville, Va.  
 Patrick, Rachel Elizabeth (R) (So.) 215 E. Hardin Ave., College Park, Ga.  
 Patterson, Nancy Ann (R) (So.) 2511 Oak St., Valdosta, Ga.  
 Patterson, Sallie Susanne (R) (So.) 306 N. 2nd St., Seneca, S. C.  
 Pearre, Helen Lawrence (NR) (Jr.) 210 Stilwell Oaks Rd., Charlotte, N. C.  
 Peck, Elizabeth (R) (So.) 641 San Lorenzo Ave., Coral Gables, Fla.  
 Peeler, Catherine Steagall (NR) (Sr.) 2908 Beechnut Rd., Charlotte, N. C.  
 Pegram, Linda Ellis (R) (Jr.) Bauersfeld St., Hamlet, N. C.  
 Pendley, Marie Wakeham (NR) (Sr.) 221 S. Laurel Ave., Charlotte, N. C.  
 Peper, Pamela Susan (R) (Fr.) Bayberry Terrace, Middlebury, Conn.  
 Petree, Ann Arrington (NR) (Jr.) Rt. 1, Box 74-B, Huntersville, N. C.  
 Pharr, Ann Lampley (NR) (Sr.) 544 Concord St., Davidson, N. C.  
 Pierce, Phoebe Jane (R) (Fr.) 7223 SW 52nd Ct., Miami 43, Fla.  
 Pinkston, Rachel (R) (Fr.) Parrott, Ga.  
 Plowden, Juanita Boykin (R) (Fr.) New Zion, S. C.  
 Pool, Gypsey Ann (R) (So.) 3124 DuPont Ave., Montgomery, Ala.  
 Porter, Janet Harris (R) (Fr.) 3629 Springhill Rd., Birmingham, Ala.  
 Porterfield, Mary Ann (R) (So.) 143 Tarleton Ave., Burlington, N. C.  
 Powel, Eugenia Ann (R) (So.) 28 Port Rd., Harrisonburg, Va.  
 Powell, Joan Hamilton (NR) (So.) 900 Nottingham Dr., Charlotte, N. C.  
 Presson, Gail Carter (NR) (Sr.) 900 Essey St., Charlotte, N. C.  
 Prestridge, Judith Page (R) (Jr.) 1640 West Rd., Jacksonville, Fla.  
 Prevet, Jeannette Cecelia (R) (Fr.) 339 Forest Hill Rd., Wilkesboro, N. C.  
 Price, Patsy Long (NR) (Jr.) Rt. 6, Monroe, N. C.  
 Prince, Suzanne (NR) (Fr.) 2930 Hampton Ave., Charlotte, N. C.  
 Purvis, Sarah Williamson (NR) (Jr.) 4734 Elder Ave., Charlotte, N. C.  
 Quick, Mary Ellen (R) (So.) 802 West Ave., Charleston, W. Va.  
 Quillen, Nancy Ann (R) (So.) Rt. 3, Matthews, N. C.  
 Rainwater, Kathleen Joyce (R) (Fr.) 1116 Cherokee Rd., Florence, S. C.  
 Randolph, Eleanor Rainsford (R) (Fr.) 917 Fairway Dr., Pensacola, Fla.  
 Rentz, Carolyn Baker (R) (So.) Oakcrest Dr., Reidsville, N. C.  
 Rice, Elizabeth Anne (R) (Fr.) 4324 Worth Dr. E., Jacksonville, Fla.  
 Rich, Anne Boyce (NR) 212 Colville Rd., Charlotte, N. C.  
 Rivers, Mary Elizabeth (R) (So.) Route 3, Chesterfield, S. C.  
 Robertson, Elizabeth Breckenridge (R) (Fr.) Rt. 5, Frederick, Md.  
 Robertson, Priscilla Anne (R) (Fr.) 305 Mt. Vernon Dr., Wilson, N. C.  
 Robinson, Carol Virginia (R) (Fr.) Rt. 4, Arkadelphia, Ark.  
 Robinson, Jeannette Dillard (NR) (Jr.) 203 Crest Dr., Mt. Holly, N. C.  
 Rockett, Lane Summers (R) (Jr.) 908 South St., Gastonia, N. C.  
 Rogers, Carolyn Anne (R) (Sr.) 719 Taylor St., Bristol, Tenn.  
 Rogers, Marian Smith (NR) (Jr.) 4820 Murrayhill Rd., Charlotte, N. C.  
 Rohrbaugh, Sue Woodson (NR) 1053 Bolling Rd., Charlotte, N. C.  
 Rollins, Phoebe Blackwell (NR) 124 N. Laurel Ave., Charlotte, N. C.  
 Rose, Mary Virginia (R) (Jr.) 507 Rosewood Dr., Country Club Estates, Florence, S. C.  
 Ross, Sue Fields (R) (Sr.) I407 Pine Valley Loop, Fayetteville, N. C.  
 Royal, April Elaine (R) (Fr.) 109 Barrus Ave., Clinton, N. C.  
 Royal, Louise Fuller (NR) (So.) 602 N. Main St., Mt. Holly, N. C.  
 Rucker, Elizabeth Carol (R) (Fr.) Rt. 6, Thomasville Hwy., Moultrie, Ga.  
 Rutherford, Gail Genevieve (R) (Sr.) Box 131, Valdese, N. C.  
 Rutter, Mary Susan (R) (So.) 184 Berwind Circle, Radnor, Pa.  
 Safford, Christine Elissa (R) (Fr.) 85 S. Lansdowne Ave., Lansdowne, Pa.  
 Sanders, Ann Ledbetter (NR) (Fr.) 2839 Chelsea Dr., Charlotte, N. C.  
 Sanders, Jane Marie (R) (Jr.) 401 W. Vance St., Laurinburg, N. C.  
 Sawyer, Marie Wilkins (NR) (Jr.) 1016 Guilford Rd., Charlotte, N. C.  
 Scarborough, Pamela Grayce (R) (So.) 107 E. Baya Ave., Lake City, Fla.  
 Scholten, Ruth Christina (R) (Jr.) 621 Chatham Hill Rd., Marion, Va.  
 Schott, Geoffrey Jordan (NR) 1416 Maryland Ave., Charlotte, N. C.  
 Scott, Sharon (R) (Fr.) Tillar, Ark.  
 Scruggs, Susan Ann (R) (Fr.) Box 65, Church Hill, Tenn.  
 Seawell, Margaret Berryman (R) (Fr.) 102 S. Broad St., Suffolk, Va.  
 Seay, Marguerite Ray (R) (Sr.) 1602 Wilmington Ave., Richmond, Va.  
 Shaffer, Rebecca White (R) (Jr.) 120 Lovell Ave., Princeton, W. Va.  
 Shaw, Susan Jacqueline (NR) (Sr.) 316 W. Kingston Ave., Charlotte, N. C.  
 Shelley, Sara Carolyn (R) (So.) 507 Staley St., Marianna, Fla.  
 Sblein, Carol Marie (NR) (Jr.) 4200 Albemarle Rd., Charlotte, N. C.  
 Showalter, Anne Hunter (R) (Fr.) 5626 Windemere Dr., Jacksonville, Fla.  
 Sims, Patricia Moore (R) (Jr.) 157 The Prado NE, Atlanta, Ga.  
 Sledge, Elizabeth Anne (R) (Fr.) 303 N. Lee St., Whiteville, N. C.  
 Slevin, Irma Sandra (R) (Fr.) 3004 Hermosa Lane, Haverstown, Pa.  
 Slocum, Sue Beth (R) (Fr.) 1317 Dogwood St., NW, Washington 10, D. C.  
 Sloop, Harriet Erwin (R) (Sr.) 337 Forest Hills Rd., N. Wilkesboro, N. C.  
 Smith, Bettie Kerfoot (R) (Fr.) "Hycotee", Blanch, N. C.  
 Smith, Dorothy Varney (NR) (Fr.) 600 Sugaw Creek Rd., N. Charlotte, N. C.  
 Smith, Marjorie Louise (R) (So.) 215 W. Greening Ave., Las Cruces, N. M.  
 Smith, Rosemary Howard (R) (Fr.) Northwood Dr., Pulaski, Va.  
 Souther, Rita Kay (R) (Fr.) Rt. 2, Campobello, S. C.  
 Spainhour, Margaret W. (NR) 1404 Ivey Dr., Charlotte, N. C.  
 Speake, Carol Ann (R) (Sr.) 641 Crystal Dr., Spartanburg, S. C.  
 Springs, Joanna Augusta (R) (So.) 857 7th St. NW, Hickory, N. C.  
 Sprinkle, Laura Kathryn (R) (Sr.) 2626 Forest Dr., Winston-Salem, N. C.  
 Spurling, Anthea (R) (Fr.) Middle Rd., Devonshire, Bermuda  
 Stallworth, Marion Gene (R) (Jr.) 102 Sunset Dr., Chester, S. C.  
 Stamey, Dorothy Marie (R) (Fr.) Taylorsville, N. C.  
 Starnes, Eleanor Ruth (NR) (Sr.) 301 N. Crigler St., Charlotte, N. C.  
 Stedman, Suzanne Hamilton (R) (So.) Box 829(RD), Charlotte, N. C.

NOW OPEN  
**HEART OF CHARLOTTE**  
*Motor Inn*

CHARLOTTE, NORTH CAROLINA

- ★ 108 MODERN ROOMS AND SUITES
- ★ 2 DINING ROOMS
- ★ 2 SWIMMING POOLS
- ★ CHARLOTTE'S NEWEST AND FINEST

---

Five Minutes From The Square At . . . .  
3815 N. TRYON STREET                      DIAL FRanklin 7-4441

Geo. W. Serrett, Gen'l Mgr.



A familiar sight to Queens girls  
**PARK LANES, INC.**

CHARLOTTE'S  
BOWLING  
PARADISE

1700 Montford Drive

JA 3-7633



Miss Caroline Stiles

BOB  
*Wefsh*  
STUDIO

813½ Providence Road

FR 6-1472

# Students 1960-61

- Steiner, Ruth Bascom (NR) 1100 Andover Rd., Charlotte, N. C.  
 Stell, Patricia (R) (So.) 3021 Providence Rd., Charlotte, N. C.  
 Stephens, Ann Marie (R) (Fr.) 822 W. Second St., Roanoke Rapids, N. C.  
 Stewart, Janice Harris (NR) (Jr.) Harrisburg, N. C.  
 Stiles, Caroline Lenora (R) (So.) Cherokee Hotel, Tallahassee, Fla.  
 Stroupe, Cynthia Kay (R) (Fr.) 1805 S. Belvoir Blvd., S. Euclid, Ohio.  
 Sutherland, Mammie Ann (R) (So.) 209 W. Second Ave., Easley, S. C.  
 Swain, Martha Suzanne (R) (So.) Box 34, Landis, N. C.  
 Swaringen, Eloise (NR) Route 9, Box 311, Charlotte, N. C.
- Tallman, Jane Tyler (R) (Jr.) 7012 Monument Ave., Richmond, Va.  
 Taylor, Henrietta MacKinnon (R) (Sr.) 510 E. Second St., Ayden, N. C.  
 Taylor, Kathryn Moore (R) (So.) 614 Franklin Dr., Roanoke Rapids, N. C.  
 Thomas, Elizabeth Lee (R) (So.) 143 Memorial Dr., Walterboro, S. C.  
 Thompson, Linda Adair (R) (Sr.) 329 Summit Ave., Salisbury, N. C.  
 Thompson, Mae Elizabeth (R) (Fr.) 1200 Evergreen Ave., Goldsboro, N. C.  
 Thompson, Rebecca Anne (R) (Jr.) 1648 Pineola Ave., Kingsport, Tenn.  
 Thomson, Elizabeth Motte (R) (Sr.) 319 Crescent Ave., Greenville, N. C.  
 Thor, Patricia Anne (NR) 1759 Wilora Lake Road, Charlotte, N. C.  
 Thurman, Lynoe (R) (Fr.) 525 Brentwood Dr. NE, Atlanta, Ga.  
 Tinsley, Tina Theresa (R) (Fr.) 1601 Minnesota Ave., Winter Park, Fla.  
 Tolley, Fidelia Ellen (R) (Fr.) Rt. 5, Lexington, Va.  
 Tooniog, Susan Gail (R) (So.) 396 Beveridge Rd., Ridgewood, N. J.  
 Towery, Nancy Dalton (R) (Fr.) Box 518, Rockwell, N. C.  
 Travis, Jennie Kay (R) (Fr.) 2369 Maplewood Ave., Winston-Salem, N. C.  
 Trickett, Sandra Sue (R) (So.) 19035 Dixie Dr., Mt. Clemeos, Mich.  
 Trivette, Myrtle Jane (R) (Fr.) Box 68, Cameron, N. C.  
 Trobaugh, Cynthia Parrott (R) (So.) Lyn Mar Hills, Morristown, Tenn.
- Vance, Genie (R) (Sr.) 343 Vance Dr., Holston Hills, Bristol, Tenn.  
 Vance, Lynn Scroggs (R) (Fr.) 95 Main St., Canton, N. C.  
 Vandiver, Ruth Ann (R) (Sr.) 418 E. Shore Dr., Spartanburg, S. C.  
 Vaughan, Mary Jacqueline (R) (Sr.) 437 Lynn Ave., Winston-Salem, N. C.
- Wagner, Mary Kaye (R) (Fr.) 1100 Lake Side Dr., Statesville, N. C.  
 Walton, Margaret Doyle (R) (Sr.) 5617 Auburn Rd., Jacksonville, Fla.  
 Wang, Shu Mei (R) (Jr.) 2 Chome, Yamamoto Dori, Kobe, Japan.  
 Ward, Judith Irene (NR) (So.) 217 Middleton Dr., Charlotte, N. C.  
 Warlick, Anita Louise (NR) (Jr.) 3913 Belcross Dr., Charlotte, N. C.
- Waters, Martha Lucille (R) (Fr.) 2101 Manvel St., Raleigh, N. C.  
 Watson, Martha Warren (R) (Fr.) 2404 Sherwood St., Greensboro, N. C.  
 Weatherly, Emily Ann (R) (So.) 311 W. Main St., Latta, S. C.  
 Weathers, Roberta Rowe (R) (So.) 103 Hillside Dr., Shelby, N. C.  
 Weeks, Sally McClamma (NR) (Sr.) Box 1026, Davidson, N. C.  
 Weldon, Camela Underhill (R) (Fr.) 50 Century Lane, Watchung, N. J.  
 Weller, Lillian Shannonhouse (NR) 240 Colville Rd., Charlotte, N. C.  
 Wells, Jane McSherry (R) (Fr.) 2625 St. Mary's St., Raleigh, N. C.  
 Wenham, Pamela James (R) (So.) 17 Ridgewood Rd., Rome, Ga.  
 West, Barbara Harrison (R) (Jr.) 1506 Morganton Rd., Fayetteville, N. C.  
 West, Ellie Jane (R) (Sr.) 1012 E. Broad St., Statesville, N. C.  
 West, Frances Usery (NR) 7611 E. Lane Dr., Charlotte, N. C.  
 White, Margaret Jamesoo (R) (Jr.) 3428 Hycliffe Ave., Louisville, Ky.  
 White, Mary Elizabeth (R) (Sr.) 415 Suffolk Ave., Richlands, Va.  
 White, Mary Lee (R) (Sr.) 100 Liberty St., Williamston, N. C.  
 Whitenack, Phyllis Ann (R) (Jr.) 1020 Heatherwood Rd., Bluefield, W. Va.  
 Whitener, Frances Troutman (NR) (Sr.) 118 Tuckaseegee Rd., Charlotte, N. C.  
 Whiteside, Mary Carolyn (R) (So.) 806 Adair Ave., NE, Atlanta, Ga.  
 Whitley, Evelyn Jane (R) (Fr.) 86 N. Spring St., Concord, N. C.  
 Whitley, Harriett Elliott (NR) (Jr.) Apt. 4, 1714 Cliffwood Pl., Charlotte, N. C.  
 Wilkes, Ruth Kirkland (R) (Sr.) 2402 Lively Trail, NE, Atlanta, Ga.  
 Wilkinson, Lynda Sue (NR) (Sr.) 926 Leigh Ave., Charlotte, N. C.  
 Williams, Angela (R) (So.) 114 Library St., Moncks Corner, S. C.  
 Williams, Catharine Cecelia (R) (So.) 2894 Old Berwick Rd., Bloomsfield, Pa.  
 Williams, Sandra Lynn (R) (Sr.) Box 488, Rutherfordton, N. C.  
 Williamson, Sally McGregor (R) (So.) 2818 Gervais St., Columbia, S. C.  
 Wilson, Mary Harvey (R) (Fr.) 1852 Military Rd., Huntington, W. Va.  
 Winfree, Jo Ann (R) (So.) 711 Beaver Dam Rd., Raleigh, N. C.  
 Wingate, Joyce Eleanor (NR) (Sr.) Rt. 6, Box 586, Charlotte, N. C.  
 Wiriden, Peggy Elaine (NR) (Jr.) 1546 Stanford Place, Charlotte, N. C.  
 Wise, Mary Paotter (NR) 3310 Sudbury Rd., Charlotte, N. C.  
 Woodard, Sara Blanche (R) (Fr.) 105 N. Madison St., Whiteville, N. C.  
 Woodham, Margaret Nan (R) (Sr.) 212 Main St., McColl, S. C.  
 Woods, Martha (R) (Sr.) 106 Henry St., Chester, S. C.  
 Woodward, Rosalyn (R) (Sr.) Box 348, Eastman, Ga.  
 Wright, Mildred Kathleen (R) (So.) W. End Rd., Chester, S. C.  
 Wyatt, Sally Ann (R) (Fr.) Stoneville, N. C.
- Yelton, Evelyn Lee (R) (Sr.) 931 N. Main St., Rutherfordton, N. C.  
 Yoos, Agnes Greene (NR) 3310 Driftwood Dr., Charlotte, N. C.  
 Young, Martha Paige (R) (So.) 310 Walnut Ave., Mt. Holly, N. C.

Be Sociable

Have A Pepsi

**PEPSI-COLA**®





# CHARLOTTE ENGRAVING COMPANY

# *Charcoal Steak House*

We Serve More Charcoal Cooked Steaks than Anyone in the South.



- total seating capacity 475
- banquet facilities for 225
- 7 private rooms with seating capacity from 8-24



For Reservations

Dial ED 2-2414

"Across From WBTV"

1800 West Morehead St.

Open nightly from 5 p.m. - 12 p.m.



**1<sup>ST</sup> NAME  
IN YEARBOOKS**



**WORD IN YEARBOOKS**

OBSERVER PRINTING HOUSE

**LAST**

where you find discriminating buyers  
of fine yearbooks you will find . . .

1<sup>st</sup> . . creative designing . . .

2<sup>nd</sup> . . unparalleled craftsmanship . . .

3<sup>rd</sup> . . cooperative servicing . . .

4<sup>th</sup> . . highest quality reproduction . . .

. . . the OBSERVER PRINTING HOUSE  
CHARLOTTE, NORTH CAROLINA



*That long awaited day has come at last.  
Taking your diploma and the knowledge for which it stands,  
you embark on a new phase of your life.  
Leaving Queens, your friends, and memories behind,  
you step forward  
with our confidence, our pride, and our sincere best wishes.  
BON VOYAGE!*





QUEENS EVERETT LIBRARY



5 0703 00163448 2

AMERICAN  
GENEALOGICAL SOCIETY  
CHARLOTTE  
NORTH CAROLINA  
KINGSBRAE